



**PALAIS DES
FESTIVALS
ET DES CONGRÈS
CANNES**

**PALAIS DES
FESTIVALS
ET DES CONGRÈS
CANNES**

ORGANISER'S GUIDE



CONTENTS

© Palais des Festivals et des Congrès de Cannes - November 2023
Reproduction or copying is prohibited
Printed on paper from sustainably managed forests and controlled sources
Illustration photos : Hervé Fabre, Jérôme Kélagopian, Michel Perreard

DESTINATION CANNES	6	35 000 M² OF EXHIBITION SPACE	36
A very accessible destination 8		Exhibition Hall 38	
A wide range of quality accommodation 9		Riviera Space 39	
Welcoming the world sustainably! 10		Rotonde Lérins 40	
A responsible site 11		Les Ambassadeurs lounge 41	
Thinking about the impact of your event 12		Mediterranean hall 42	
Contributing locally 13		Du Plantier & Ortega Tuscan Spaces 43	
		Press lobby, B+3 44	
		Foyers - Théâtre Claude Debussy 45	
A GENERAL OVERVIEW OF SPACES	14	UNIQUE AND EXCEPTIONAL RECEPTION AREAS	46
		Rotonde Lérins 48	
5 AUDITORIUMS	16	Ambassadors' Lounge 50	
Grand Auditorium Louis Lumière 18		Salon Pierre Viot 51	
Théâtre Claude Debussy 20		Rotonde Riviera 52	
Hi5 Studio 22		Riviera Hall 53	
Auditorium Jean Mineur 24		Foyers - Grand Auditorium Louis Lumière 54	
Auditorium Philippe Erlanger 25		Foyers - Théâtre Claude Debussy 55	
		11 Terraces 56	
15 SUB-COMMITTEE ROOMS	26	SALES DEPARTMENT & DIGITAL PROJECTS CONTACT	58
Rooms B, C, D, E 27			
Rooms F, G, H 28		MY FIRST EVENT	60
Rooms I, J 29			
4 Press Rooms 30		SOME HAPPY CUSTOMERS	62
California conservatory 31			
Salon Pierre Viot 32			
30 ORGANISERS' OFFICES	34		

DESTINATION CANNES



Cannes has demonstrated its ability to successfully host major national and international events for professionals and the general public alike...



Voted **twice**, Best Destination in the **WORLD**,
For hosting Festivals and Events, **2022 & 2023**



Voted **4 times**, Best Destination in **EUROPE**,
for hosting Festivals and Events,
2021, 2022, 2023 & 2024

**VERY GOOD
ACCESSIBILITY**

**A WIDE RANGE OF
ACCOMMODATION**
and very high quality

A HOST SITE
and professional teams to host the biggest
events

UNIQUELY COMPACT
where everything can be done on foot in
an exceptional Mediterranean setting

FOR THE 2ND CONSECUTIVE

CANNES

**VOTED BEST DESTINATION
IN THE WORLD FOR
FESTIVALS & EVENTS**

AND FOR THE 4TH TIME,
BEST EUROPEAN DESTINATION
FOR FESTIVALS & EVENTS

FOR THE 2ND YEAR RUNNING
CANNES AWARDED
WORLD'S LEADING FESTIVAL
& EVENT DESTINATION

AND FOR THE 4TH YEAR RUNNING
CANNES AWARDED EUROPE'S LEADING
FESTIVAL & EVENT DESTINATION



**RENDEZ
VOUS À
CANNES**


PALAIS DES
FESTIVALS
ET DES CONGRÈS


CANNES
CÔTE d'AZUR
FRANCE

cannes-france.com

A DESTINATION THAT IS VERY ACCESSIBLE



Less than 2.5 hours from Europe's major capitals



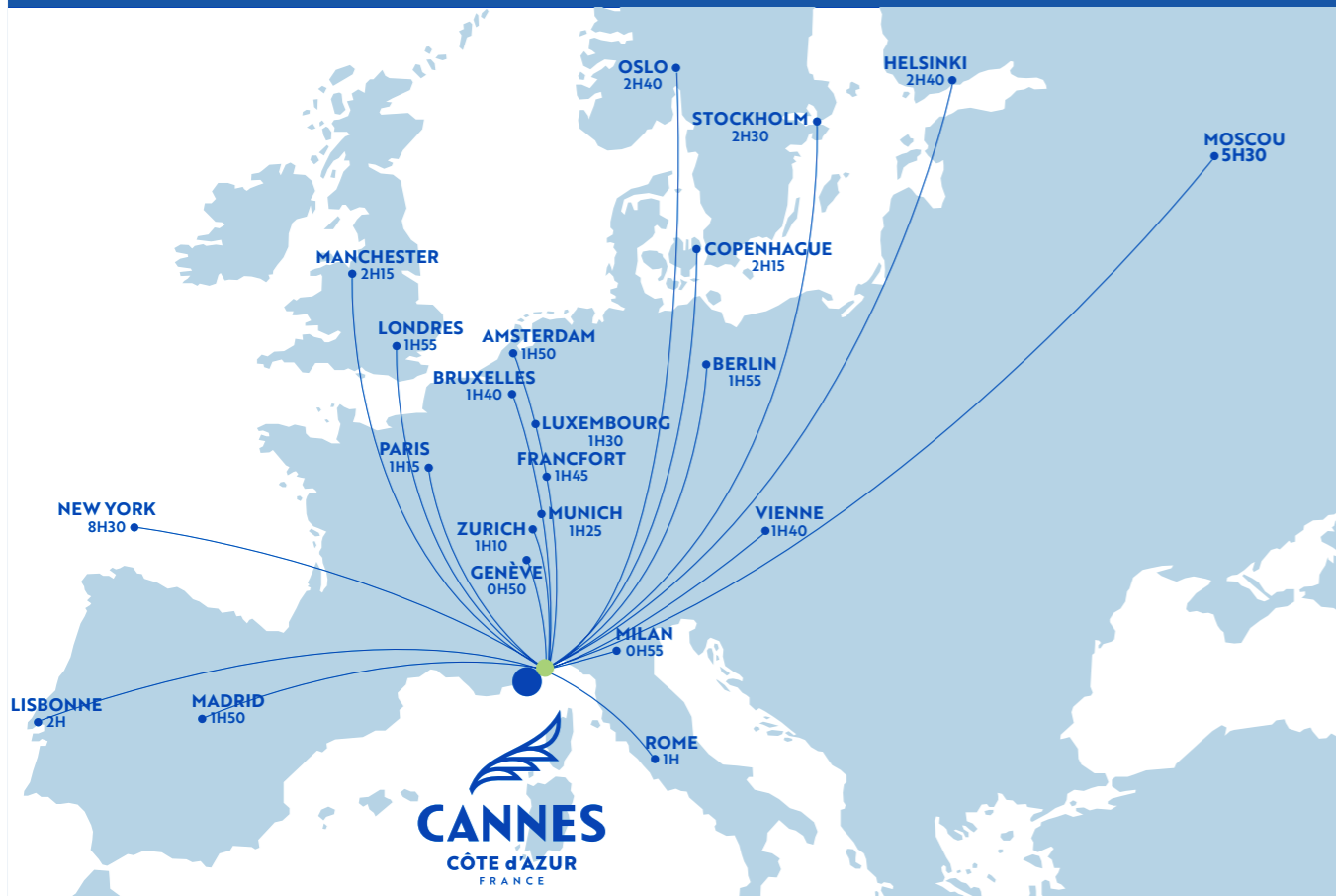
+ More than 50 airlines offer direct flights throughout Europe.
Direct flights from the **United States** (New York, Atlanta and Philadelphia), from the **Middle-East** (Dubai, Doha, Riyad) and the **Near-East** (Tel Aviv)



Possibility of private hire of a TGV from Paris + 1 stop in Lyon
 Accessible by **night train**
TGV train station in the city centre



Motorway connected to north-south and east-west routes
20 underground car parks with over **7,000 spaces**



ACCOMMODATION DIVERSIFIED & QUALITY



Metamorphosis of the Croisette

1.5 billion euros of investment (public and private)

(a more prestigious and elegant Croisette, a reinvented heritage, modernisation and embellishment of the Vieux Port, opening of the Palm Beach in March 2024, renovation of the Carlton, Canopy, Mondrian, Majestic Barrière and Martinez hotels)

Internationally renowned top-of-the-range hotels

Cannes offers a **wide range of quality 2, 3 and 4 star accommodation accessible to all**



WELCOMING THE WORLD SUSTAINABLY

A PURPOSE-DRIVEN COMPANY

In 2022, we changed our articles of association to become a purpose-driven company. This approach involves giving our company an ethical and responsible dimension. It means the company is committed to creating value for all its stakeholders while taking account of social and environmental issues.

PARTICIPATIVE AND TRANSPARENT GOVERNANCE

The Mission Committee includes external figures recognised for their expertise, as well as our internal stakeholders. It makes it possible to monitor the actions undertaken by the company.

A RAISON D'ÊTRE Welcoming the world sustainably!

3 PILLARS

 <p>CONNECT</p> <p>at the heart of our global village, people from all over the world, because creating links is at the heart of our mission</p>	 <p>TAKING CARE</p> <p>Of those around us and our surroundings</p>	 <p>REVEAL</p> <p>talents from all over the world, because we breathe the "air of the times" and the currents that flow through it</p>
--	--	--

A CSR APPROACH



- ISO 9001 (Quality) certified
- ISO 18788 (Safety and security)
- ISO 20121 (Responsible Events)



A RESPONSIBLE SITE

IN THE HEART OF A UNIQUE NATURAL SETTING, THE COAST, THE ISLANDS AND THE HILLS

Interior and exterior spaces redesigned in an eco-responsible way, demonstrating a social and ethical commitment to limiting the impact on our environment.

OUR COMMITMENT TO RESPONSIBILITY IS BROKEN DOWN INTO 3 ISSUES IN LINE WITH OUR MISSIONS, PRINCIPLES AND VALUES:

1.

REDUCING OUR ENVIRONMENTAL IMPACT

By managing our waste sustainably, reducing our energy consumption and working with responsible partners.

2.

ENSURING A GOOD WELCOME AND WORKING CONDITIONS

By ensuring people's health and safety, supporting everyone's professionalism and raising awareness among our partners.

3.

ENSURING THE SUSTAINABILITY OF THE COMPANY

By modernising our infrastructure, launching and maintaining new trade shows and supporting local associations and other players.

100% GREEN ELECTRICITY

The electricity we use comes exclusively from renewable sources. Indeed, every kilowatt-hour we consume is accompanied by a guarantee of origin, certifying that this energy has been produced from renewable sources.

THINKING ABOUT THE IMPACT OF YOUR

ENERGY SOBRIETY

Prior to your event, a meeting will be organised with our teams in order to best meet the requirements of your event.

WATER FOUNTAIN

We have deployed a fleet of 18 water fountains throughout our facilities. Remember to list them on your plans.

WASTE

All events generate waste. The issue of waste must be addressed prior to the event. Identify the types of waste that will be generated during the event, and during set-up and dismantling. Make your participants aware of the management system that will be put in place.

CARPET

We fit the aisles of your event with a carpet made entirely of polypropylene. Unlike other types of carpet, this one is fully recoverable. It will be transformed and reused in the manufacture of other polypropylene goods. Encourage your exhibitors to use the same type of carpet.

TRAVEL

Identify the origin and means of transport of your customers and your teams. Our teams are available to discuss these issues with you.

CONTRIBUTE LOCALLY

BY SUPPORTING, AS WE DO, THE FONDATION CANNES

THE FONDATION CANNES SUPPORTS THE PRIME PROJECT, AMONG OTHERS: FACED WITH A CLIMATE EMERGENCY, THE SUSTAINABILITY OF THE MEDITERRANEAN COASTLINE IS UNDER THREAT, AS IS THE LOCAL ENVIRONMENT OF CANNES.

The **PRIME (Posidonia Restoration Initiative for a resilient Mediterranean Ecosystem) project aims to combat these problems by protecting and restoring Posidonia meadows.**

An endemic Mediterranean species, posidonia offers a host of benefits and represents a carbon sink far more important than that of the Amazon rainforest. Ultimately, the initiative will enable carbon emissions to be offset locally (via a low-carbon label), making it one of the first 'blue carbon' projects in the Mediterranean.

This project, run operationally by **NaturDive (local association)** and **Blue Leaf Conservation (local start up)**, is **accompanied by the Fondation Cannes**. This local sponsorship tool, created in 2015 at the behest of Cannes Town Council and private sponsors, **is designed to mobilise private funds, from individuals as well as companies, to support general interest projects led by local associations in the enhancement of local natural heritage and the fight against global warming.**

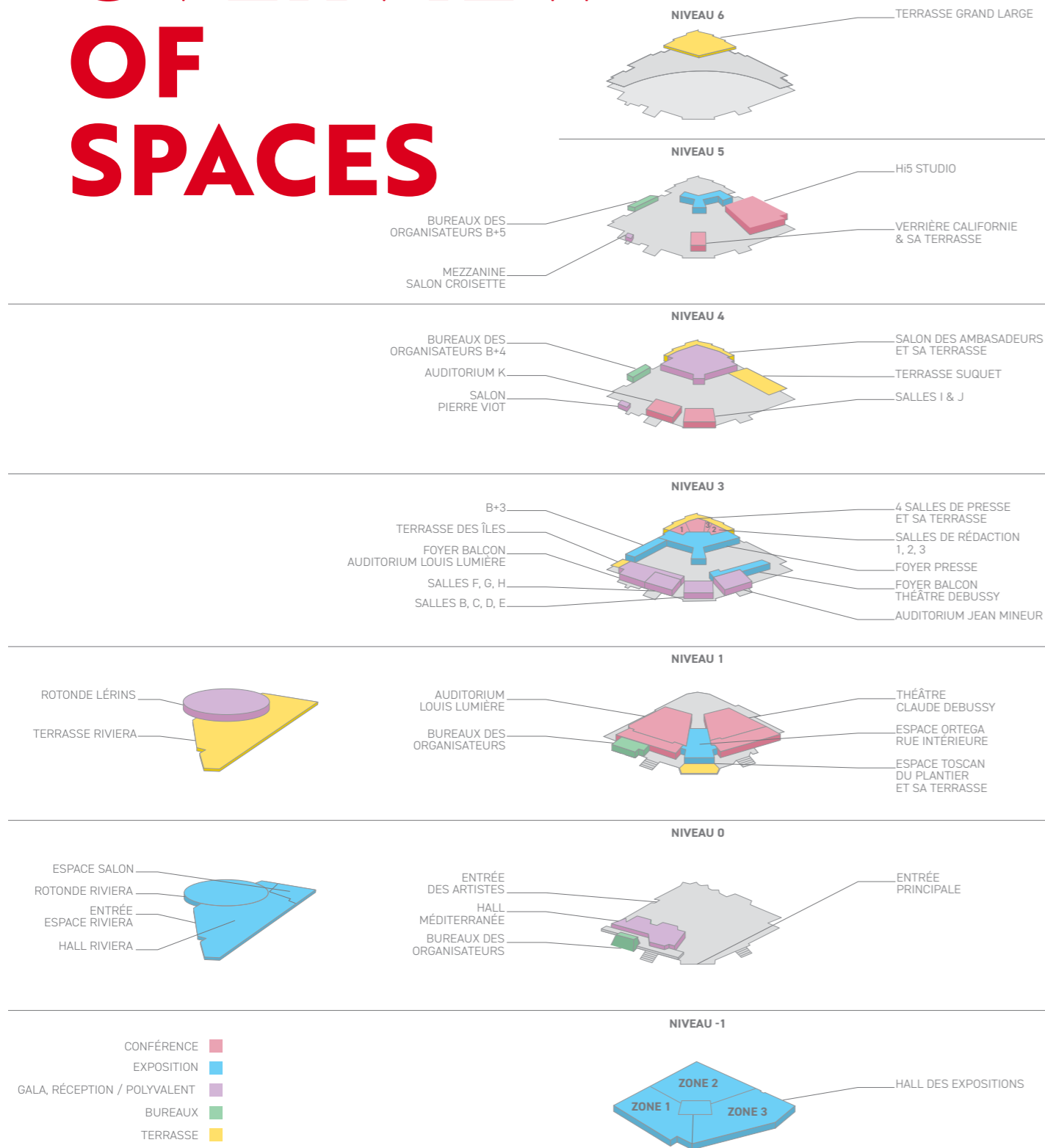
HOW CAN YOU CONTRIBUTE?

- In your own name
- Through exhibitor accreditation Through visitor passes

WHY CONTRIBUTE?

- Reducing environmental impact
- Preserving the exceptional setting for events in Cannes
- A legacy for future generations
- Promoting local stakeholders
- Mobilisation and awareness-raising
- Image enhanced by a commitment that reflects your values

GENERAL OVERVIEW OF SPACES



LEVEL	SPACE NAME	SURFACE GROSS (m²)	NET SURFACE (m²)	HSP (m)	HMC (m)	MAX. LOAD	CONFERENCE	MEETING	CLASS	CABARET	CATERING	COCKTAIL
-1	EXHIBITION HALL	13,176	8,202	2,75/2,37	2,50/2,20	500	-	-	-	-	-	-
-1	ZONE 1	3,175	2,049	2,75/2,37	2,50/2,20	500	-	-	-	-	-	-
-1	ZONE 2	6,345	3,722	2,75/2,37	2,50/2,20	500	-	-	-	-	-	-
-1	ZONE 3	3,656	2,431	2,75/2,37	2,50/2,20	500	-	-	-	-	-	-
0	HALL MÉDITERRANÉE	960	344.25	2,52/2,39	2,30/2,20	500	-	-	-	-	-	-
1	ESPACE ORTEGA	180	74	4.90	3,50/2,50	500	-	-	-	-	-	-
1	TOSCAN DU PLANTIER	170	93	3.47	3.22	500	230	68	132	80	-	320
1 & 3	AUDITORIUM LOUIS LUMIÈRE	1,860	-	-	-	400	2,309	-	-	-	-	-
1 & 3	FOYERS - AUDITORIUM LOUIS LUMIÈRE	1,266	-	-	-	-	-	-	-	-	-	2,480
1	FOYER - ORCHESTRA & CONSERVATORY	780	-	5,05/2,60/2,20	4,80/2,35/1,95	500	1,550	-	-	-	-	1,550
1 & 3	THÉÂTRE CLAUDE DEBUSSY	797	-	-	-	400	1,068	-	-	-	-	-
1	FOYER - ORCHESTRA THÉÂTRE CLAUDE DEBUSSY	845	325	4,75/3,20	3.00	500	-	-	-	-	468	1,690
3	FOYER - LOUIS LUMIÈRE BALCONY	486	-	2.75	2.40	500	-	-	-	-	-	950
3	FOYER - THÉÂTRE CLAUDE DEBUSSY	558	316	2,50/2,35	2.20	500	-	-	-	-	372	1,122
3	JEAN MINEUR AUDITORIUM	242	-	-	-	400	280	-	-	-	-	-
3	ROOMS C & D	44.45	-	3.00	-	400	40	20	24	30	-	-
3	ROOMS B & E	40.75	-	3.00	-	400	40	20	24	20	-	-
3	ROOMS F & G	36.50	-	3.00	-	400	40	20	22	20	-	-
3	ROOM H	49.45	-	3.00	-	400	50	26	32	30	-	-
3	PRESS ROOM	213	-	4,99/4,49/3,99	3.75	500	260	60	132	75	-	-
3	EDITORIAL ROOM 1	199	-	3.20	3.00	250	190	56	108	65	-	-
3	EDITORIAL ROOM 2	119.50	-	3.20	3.00	250	90	40	58	40	-	-
3	EDITORIAL ROOM 3	81	-	2.40	2.20	250	77	32	36	-	-	-
3	PRESS CENTRE	1,247	398	2,53/2,37	2.20	500	-	-	-	-	432	2,560
3	B+3	347	153	2.53	2.30	500	160	-	-	130	168	300
4	AMBASSADOR LOUNGE	1,127	492	4.15	4,00/3,90	500	1,000	-	-	580	435	948
4	SALON PIERRE VIOT	146	-	4,80/2,20	-	400	126	40	48	30	100	300
4	ROOMS I & J	78.50	-	3.20	-	400	80	32	48	50	50	-
4	AUDITORIUM K	105	-	-	-	400	147	-	-	-	-	-
5	HIS STUDIO	465.25	-	-	-	400	291/452	-	-	-	-	-
5	CALIFORNIA CONSERV-	106	-	2.77	2.50	500	100	44	60	48	-	-
0	HALL RIVIERA	3,619	1,600	3.75	3.50	500	-	-	-	-	1,848	-
0	ESPACE SALON	634	215	3.00	2.75	500	-	-	-	206	-	1,200
0	ROTONDE RIVIERA	2,624	1,445	3,25/3,80	3,00/3,50	500	-	-	-	-	1,740	-
1	ROTONDE LÉRINS	2,148	975	3.55	3.60	500	2,076	-	-	720	-	1,722
1	TERRACE LÉRINS	4,388	1,270	-	-	500	-	-	-	-	-	-

	OFFICES	QUANTITY
0	CONSERVATORY LEVEL 0	11
1	MEZZANINE CONSERV-	11
4	LEVEL 4	6
5	LEVEL 5	2

5

AUDITORIUMS

The spaces are hired with fixed equipment (sound and lighting). As outside staff are not authorised to handle the technical equipment provided in the hall, unless an exemption has been granted, it is incumbent on the Palais des Festivals et des Congrès to recruit and manage them. These services are subject to a quote.

Any specific work: pyrotechnics, working at height, hanging and lifting, laser, smoke (when using automatic equipment) must comply with regulations in force and be the subject of a project submitted for approval and control by the safety officer.

GRAND AUDITORIUM

LOUIS LUMIÈRE

SEATS

SEATS

758

+60
FOLDING SEATS

SEATS

34

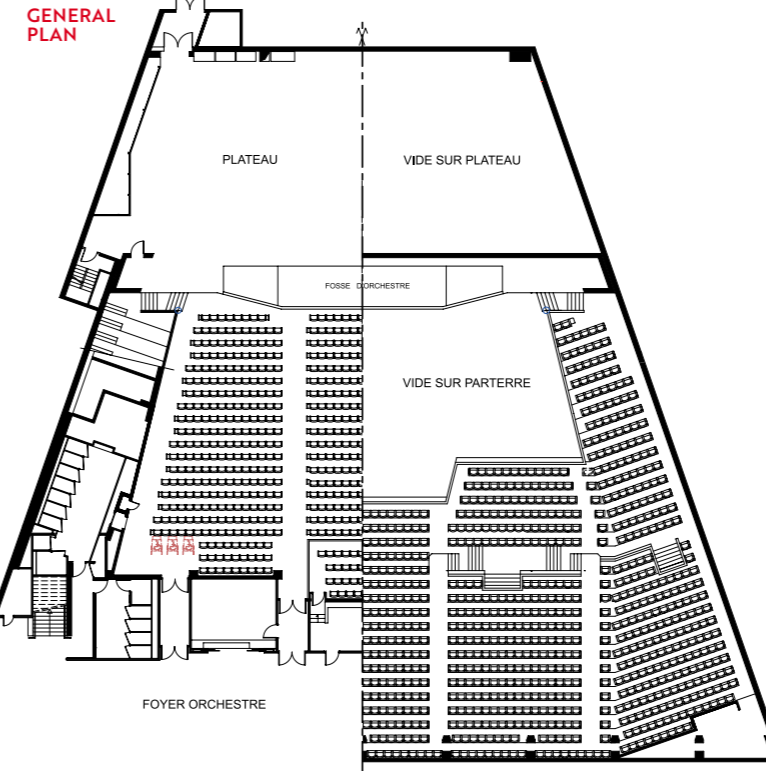
+1
FOLDING SEAT

SEATS

1,454

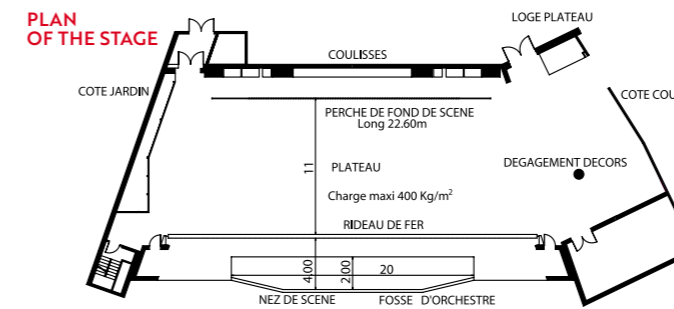
+2
FOLDING SEATS

LEVEL 1 & 3

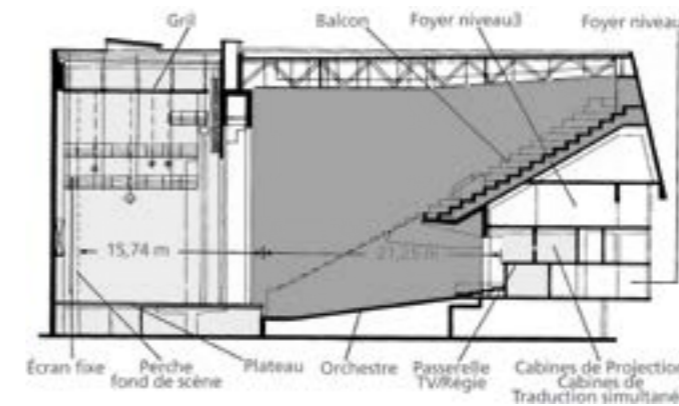


TECHNICAL CHARACTERISTICS

	SURFACE (m ²)	DIMENSIONS (m)	QUANTITY
STAGE	383	16.75 depth.	-
ORCHESTRA PIT	56	2,80 h.	-
MODULAR STAGE FRAME	-	24.70 w. x 11.20 h. max.	-
CARRIERS	-	-	42
HARROWS	-	-	5
MOBILE SCREEN	-	6 l. x 4.50 h.	1
MOBILE CYCLO	-	22 l. x 9 h.	1
BACKSTAGE	190	-	-
FREIGHT LIFT MC6	-	2.28 w. x 7.20 d. x 3.16 h.	1
TOTAL	640		



STAGE	
STAGE DEPTH FROM THE NOSE OF THE STAGE TO THE DISTANCE	16.75 m
TOTAL OPENING FACE/22 M DISTANCE	24.70 m
STANDARD OPENING	18 m
GRID HEIGHT	18 m
LOAD DISTRIBUTION ON THE GROUND	400 kg/m ²
SIMULTANEOUS TRANSLATION	6 languages
INFRARED SYSTEM	



THE LOUIS LUMIÈRE AUDITORIUM IS ACCESSIBLE BACKSTAGE VIA THE MC6 FREIGHT LIFT

CABIN	2.28 w. x 7.20 d. x 3.16 h.
MAX. LOAD	3,000 kg



THEATRE CLAUDE DEBUSSY

1068

SEATS

SEATS

SEATS

616

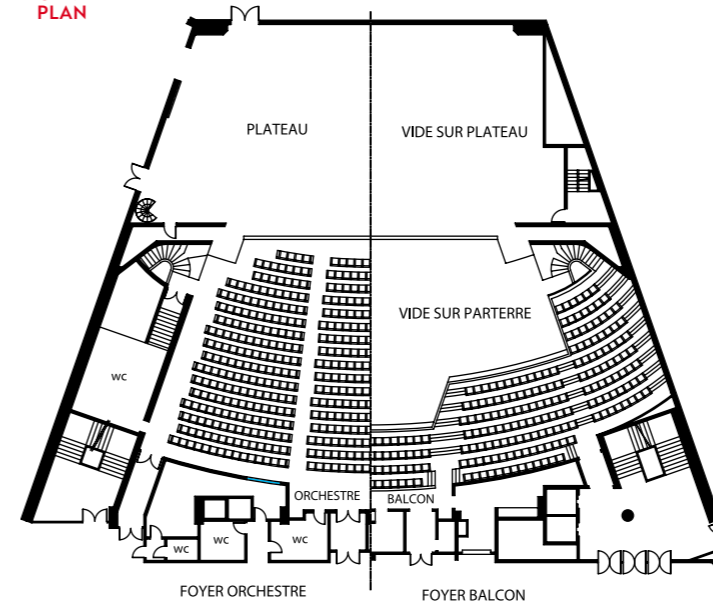
388

BALCONY

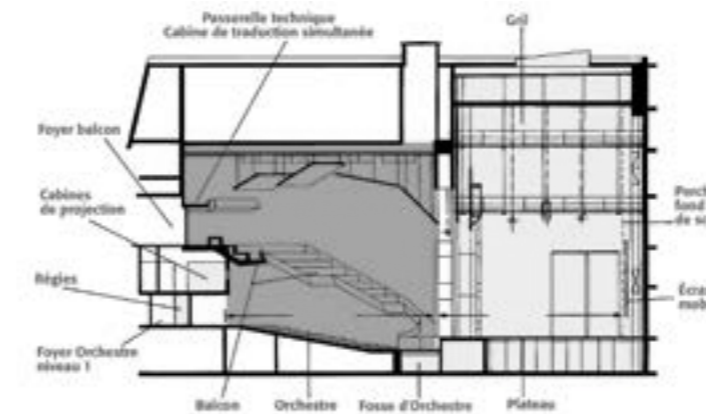
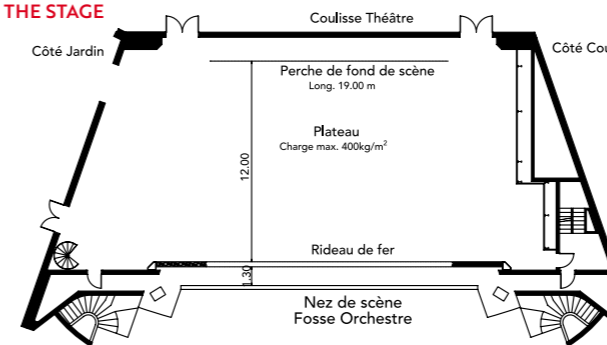
+64
FOLDING SEATS

CHAIRS WITH
TRAYS
(EXCLUDING FOLDING)

GENERAL PLAN



PLAN OF THE STAGE



TECHNICAL CHARACTERISTICS

	SURFACE (m ²)	DIMENSIONS (m)	QUANTITY
STAGE	265	13.70 depth.	-
ORCHESTRA PIT	47	-	-
MODULAR STAGE FRAME	-	19.15 w. x 7.50 h. max.	-
CARRIERS	-	18 l.	44
HARROWS	-	-	4
MOBILE SCREEN	-	6 l. x 4.50 h.	1
MOBILE CYCLO	-	16 l. x 8 h.	1
BACKSTAGE	90	-	-
FREIGHT LIFT MC6	-	2.28 w. x 7.20 d. x 3.16 h.	1

STAGE

STAGE DEPTH FROM THE NOSE OF THE STAGE TO THE DISTANCE	16.75 m
MAXIMUM OPENING	19.15 m face
OPERATION OPENING	14 m
GRID HEIGHT	17.40 m
PERCH	18 m
LOAD DISTRIBUTION ON THE GROUND	400 kg/m ²
SIMULTANEOUS TRANSLATION	6 languages
INFRARED SYSTEM	

THE AUDITORIUM DEBUSSY IS ACCESSIBLE BACKSTAGE VIA THE MC6 FREIGHT LIFT

CABIN	2.28 w. x 7.20 d. x 3.16 h.
MAX. LOAD	3,000 kg



Hi5 studio
PALAIS DES FESTIVALS

A PLUG & PLAY
SPACE

LIVE POS
2022-2024

320

SEATS
IN THE AMPHITHEATRE

CONFERENCE
KEYNOTE
MULTIPLEX
WEBINAR
TALK SHOW
TV BROADCASTS
INTERVIEWS
TELEVISION
PROGRAMME
INTERVIEW
DEBATE
TALK SHOWS

A SPACE OF 120 m²

1 DESK FORMAT JT

4 full HD turret cameras
3 return screens
4 microphones

1 STUDIO

equipped & connected
to all areas of the Palais

1 LED WALL

curved 4K 10m x 3m

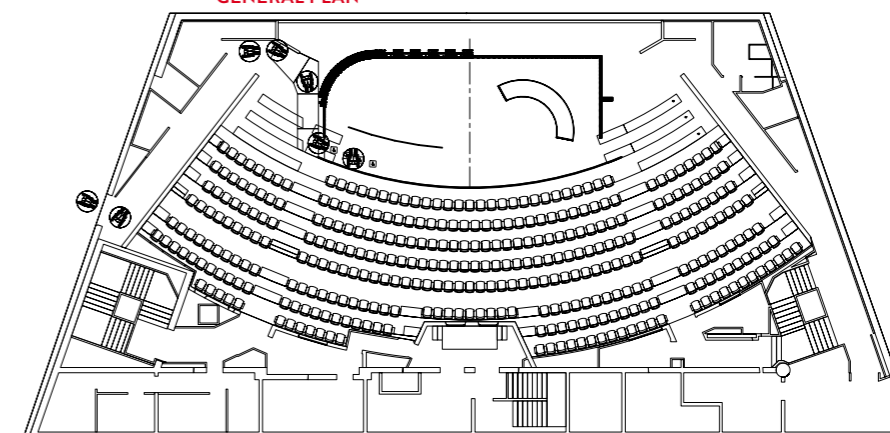
3

Stage

1 SET OF FURNITURE

(6 armchairs, 4 chairs, 1 coffee table)

GENERAL PLAN





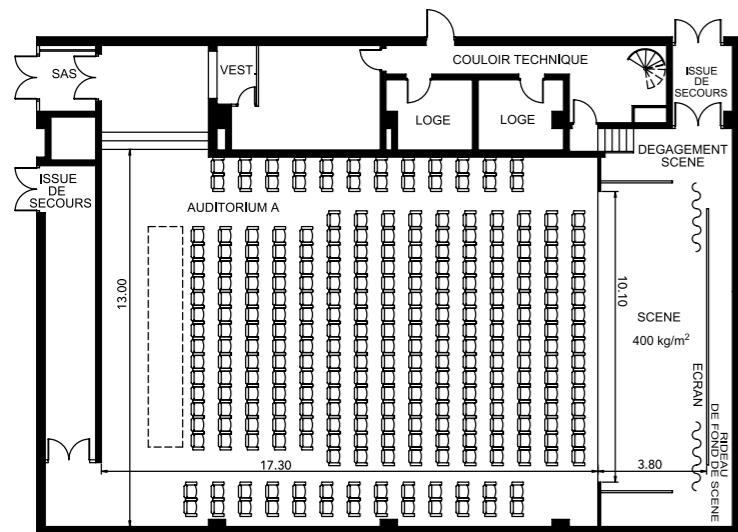
AUDITORIUM

JEAN MINOR

280 SEATS



GENERAL PLAN



TECHNICAL CHARACTERISTICS

STAGE	
STAGE DEPTH FROM THE NOSE OF THE STAGE TO THE DISTANCE	3.80 m
MODULAR	10.15 l. x 4.90 h.
OPENING	10.15 m
FIXED CINEMA SCREEN	8.31 x 3.50 m
CARRIERS	4
SIMULTANEOUS TRANSLATION	4 languages
INFRARED SYSTEM IN 3 BLIND BOOTHS	
THE SALLE JEAN MINEUR IS ACCESSIBLE VIA THE MC38 GOODS LIFT	
CABIN	2.28 w. x 7.35 d. x 3.16 h.
MAX. LOAD	3,000 kg

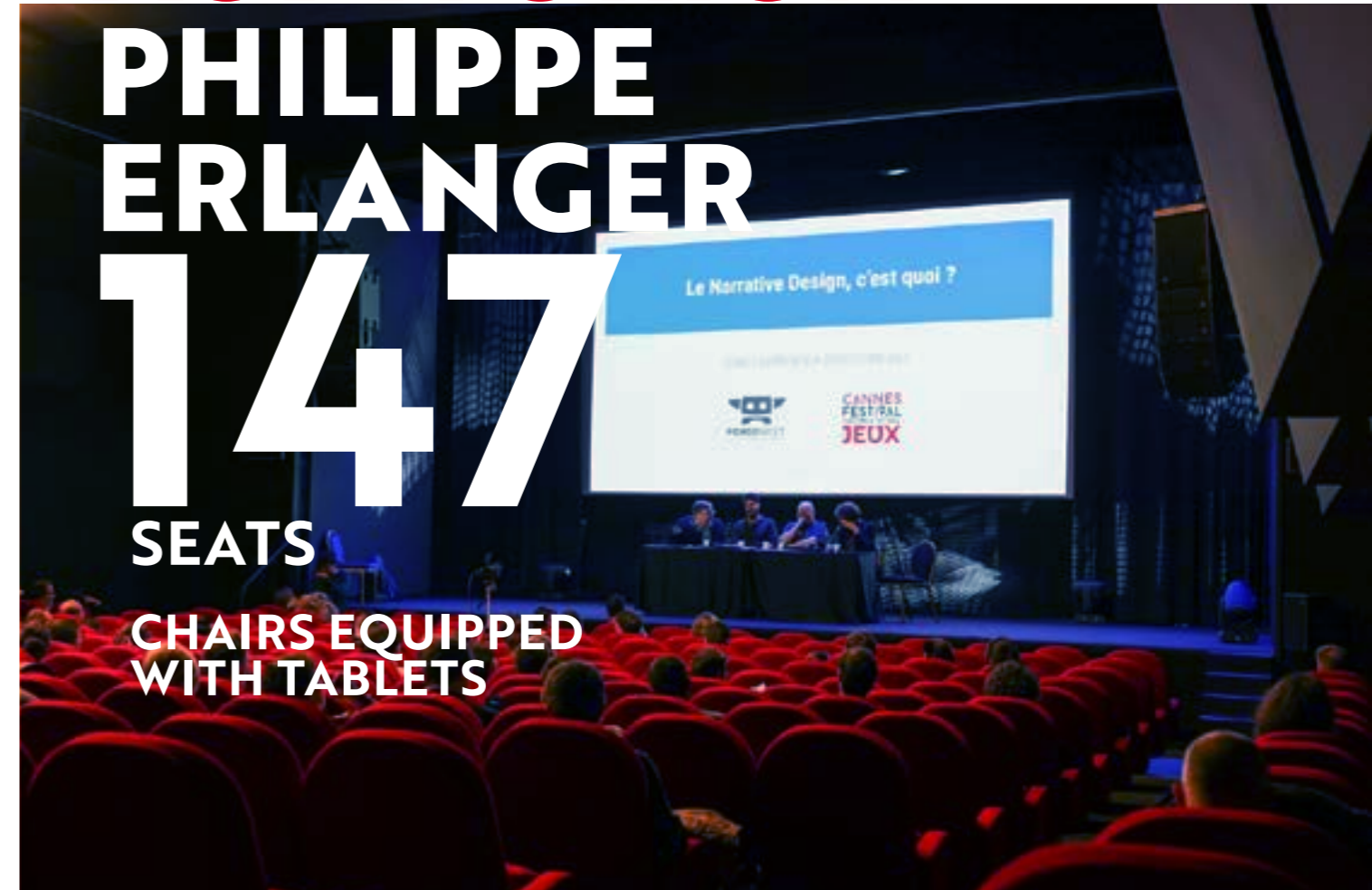


AUDITORIUM

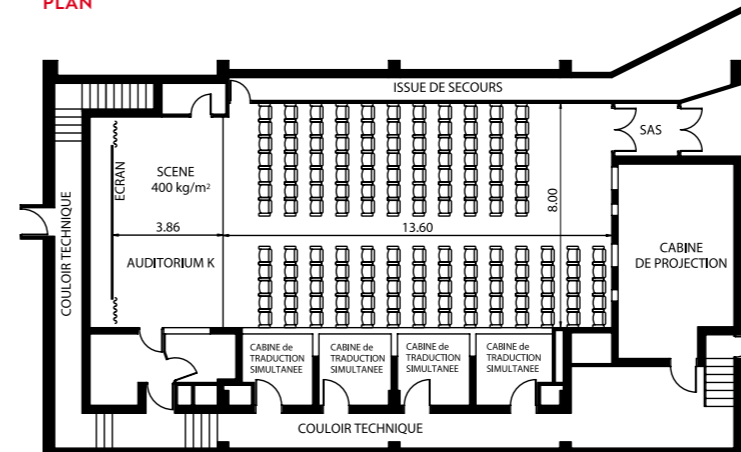
PHILIPPE ERLANGER

147 SEATS

CHAIRS EQUIPPED WITH TABLETS



GENERAL PLAN



TECHNICAL CHARACTERISTICS

STAGE	
ROOM SURFACE	107 m
STAGE SURFACE	28.50 M ²
STAGE DEPTH	3.86 m
OPENING	7.38 m
FIXED CINEMA SCREEN	5.50 x 2.50 m
MODULAR	7.36 x 3.60 m
THE PHILIPPE ERLANGER AUDITORIUM IS SERVED BY 4 MC38 LIFTS	
CABIN	1.30 w. x 1.35 d. x 2.10 h. 76 cm door width



ROOMS

BCDE

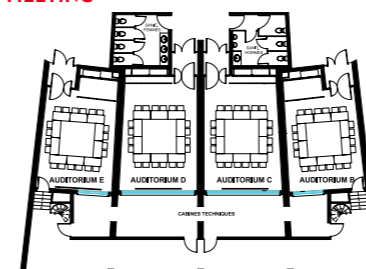
EACH ROOM HAS TWO SCREENS AT THE FRONT AND REAR



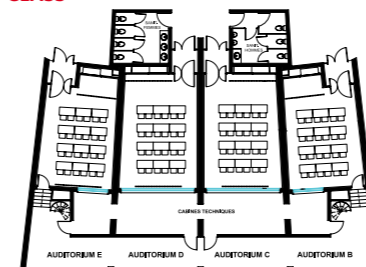
15 ROOMS FOR SUB-COMMITTEES



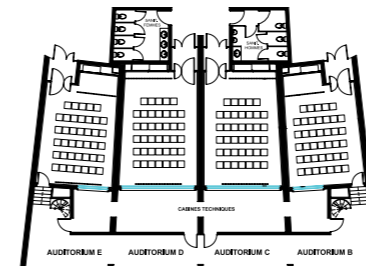
MEETING



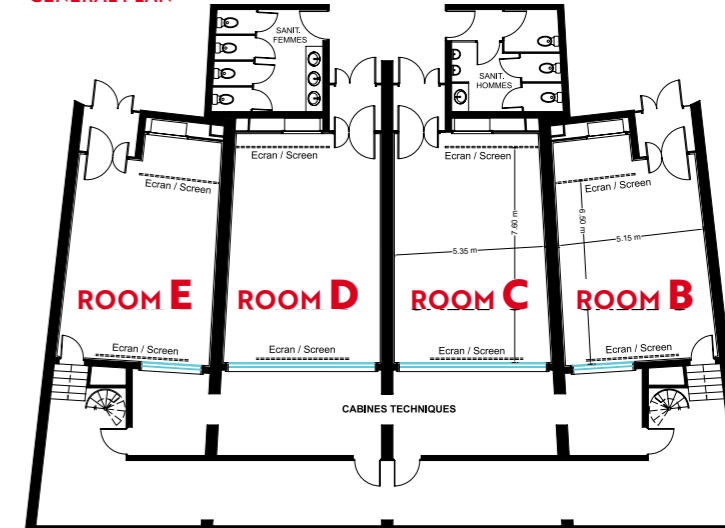
CLASS



CONFERENCE

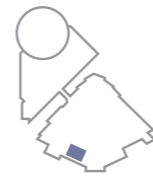


GENERAL PLAN



TECHNICAL CHARACTERISTICS

	SURFACE (M²)	SCREENS	MEETING	CLASS	CONFERENCE
ROOM B	39.35	1.80 x 1.80 H.	20	24	40
ROOM C	43.10	1.80 x 1.80 H.	20	24	40
ROOM D	43.10	1.80 x 1.80 H.	20	24	40
ROOM E	39.35	1.80 x 1.80 H.	20	24	40

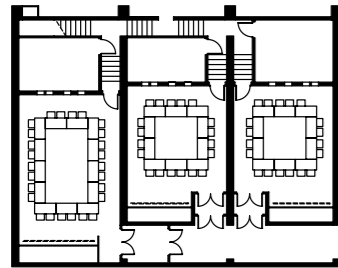


ROOMS

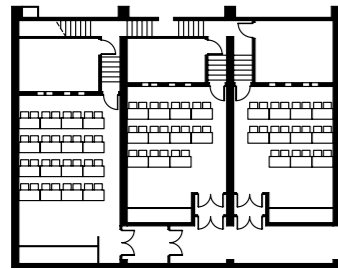
FGH



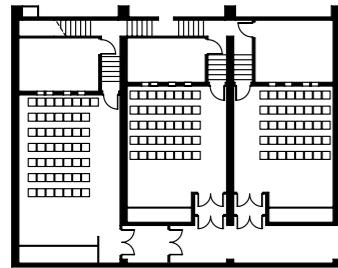
MEETING



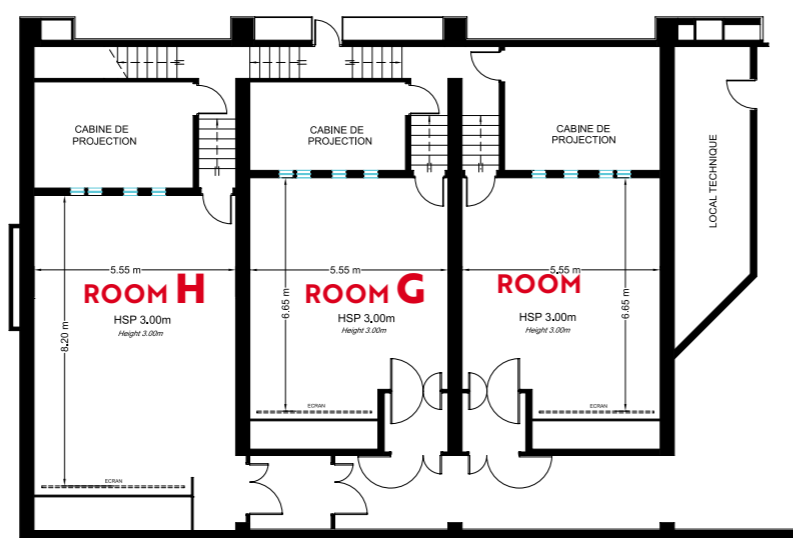
CLASS



CONFERENCE

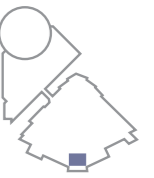


GENERAL PLAN



TECHNICAL CHARACTERISTICS

	SURFACE (M ²)	SCREENS	MEETING	CLASS	THEATRE
ROOM F	36.50	3.10 x 1.60 H.	20	22	40
ROOM G	36.50	3.10 x 1.60 H.	20	22	40
ROOM H	49.45	3.10 x 1.60 H.	26	32	50

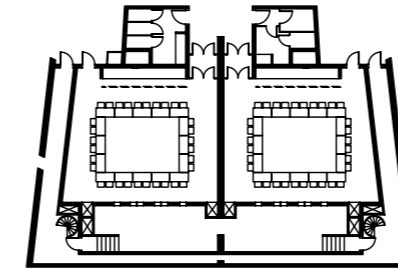


ROOMS

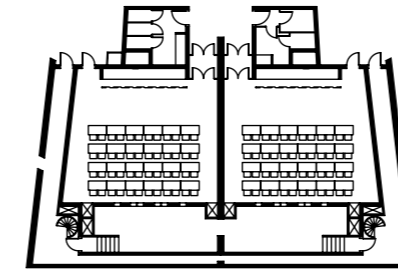
IJ



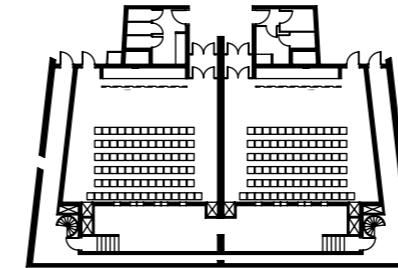
MEETING



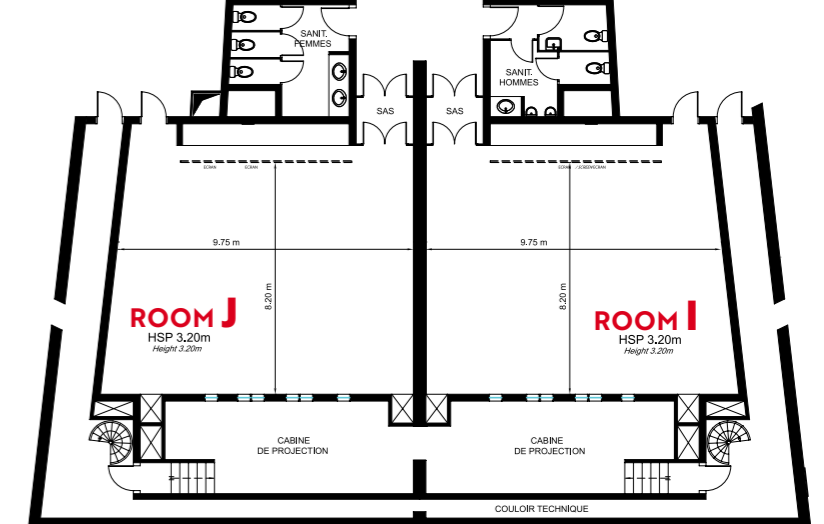
CLASS



CONFERENCE



GENERAL PLAN

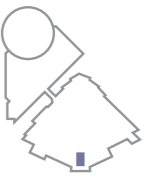


TECHNICAL CHARACTERISTICS

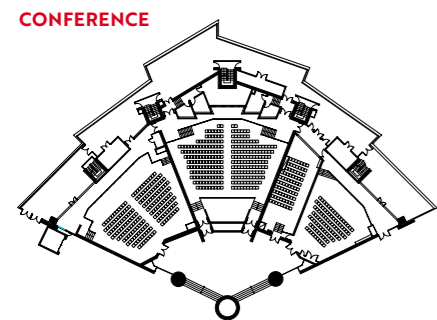
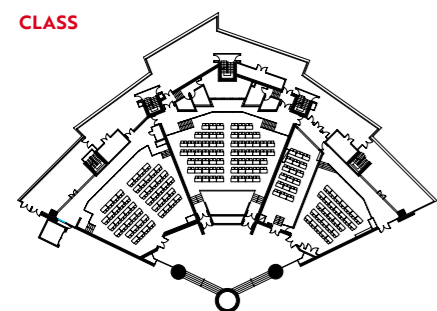
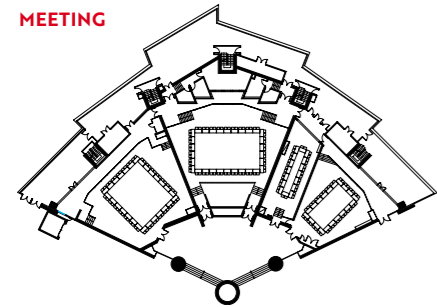
	SURFACE (M ²)	SCREENS	MEETING	CLASS	THEATRE
ROOM I	78.50	4.50 x 2.25 H.	32	48	80
ROOM J	78.50	4.50 x 2.25 H.	32	48	80



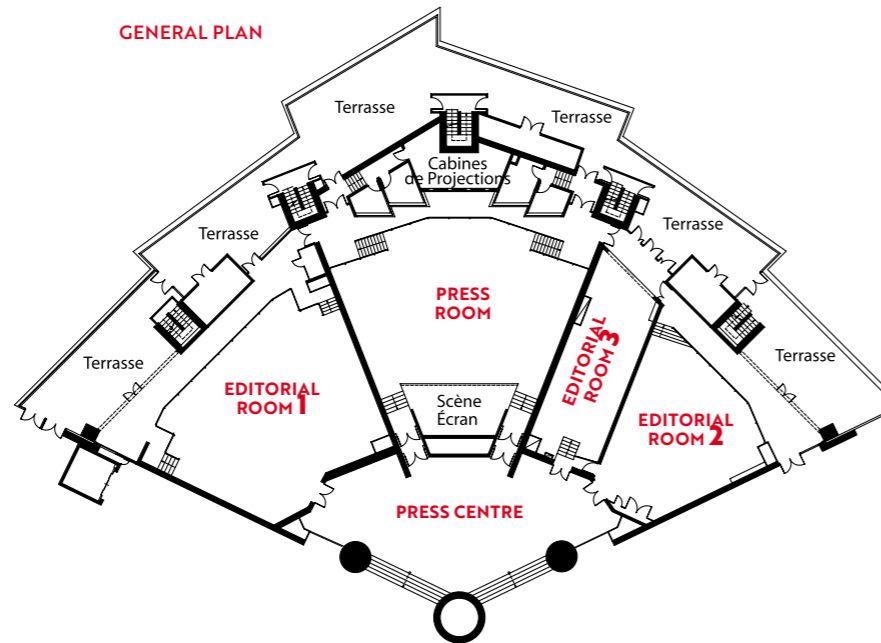
4 PRESS ROOMS



CALIFORNIA



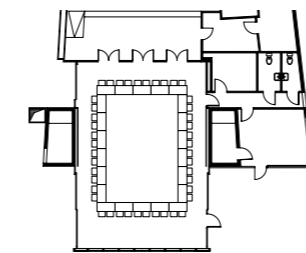
GENERAL PLAN



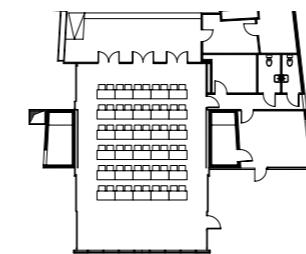
TECHNICAL CHARACTERISTICS

	SURFACE (M²)	SCREENS	MEETING	CLASS	THEATRE	CABARET
PRESS ROOM	213	5.75 x 2.65 H.	60	132	260	75
EDITORIAL ROOM 1	199	-	56	108	190	65
EDITORIAL ROOM 2	120	-	40	58	90	40

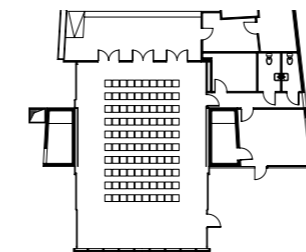
MEETING



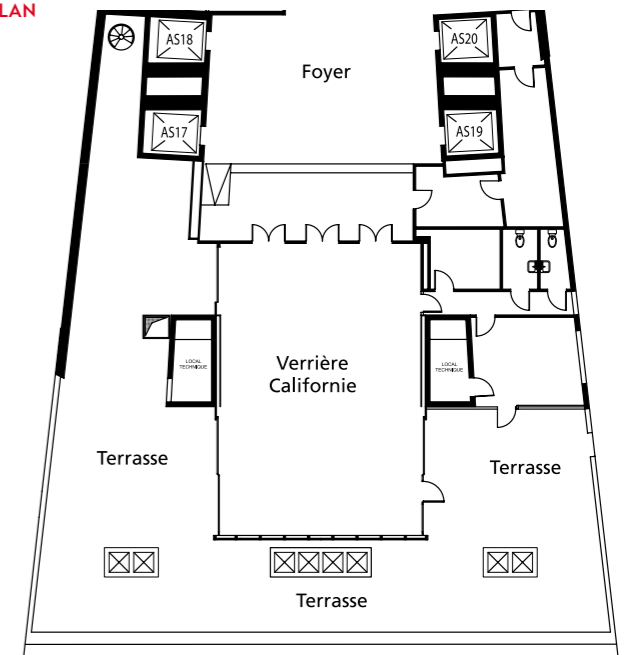
CLASS



CONFERENCE



GENERAL PLAN



TECHNICAL CHARACTERISTICS

	SURFACE (M²)	HSP	MEETING	CLASS	THEATRE	CABARET
CALIFORNIA	106.80	2.70	44	60	100	48

SALON PIERRE VIOT

208 (m²)

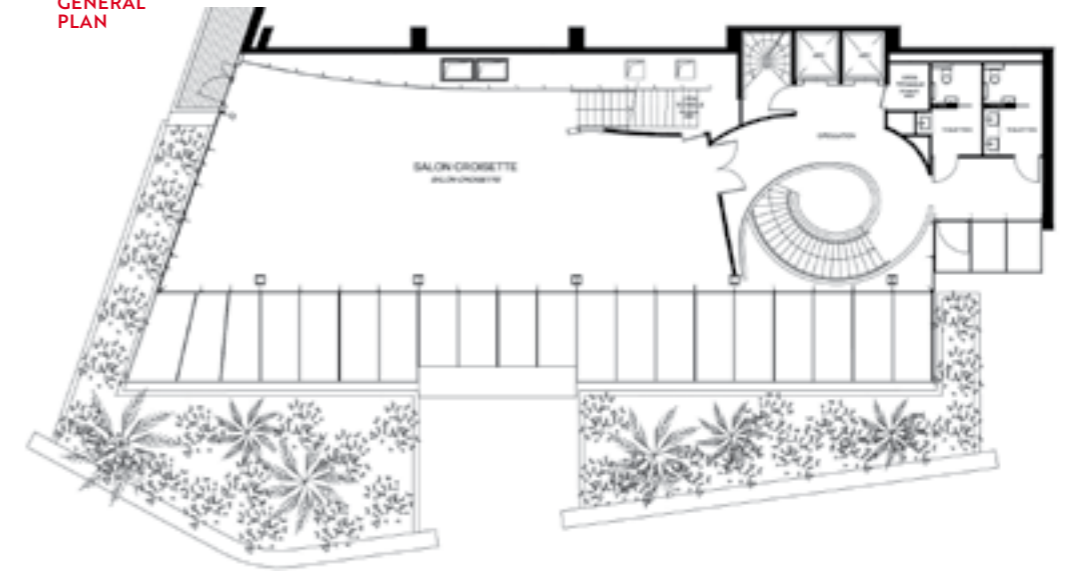
MULTI-PURPOSE SPACE,
PANORAMIC
AND LUXURY



LEVEL 4 & 5



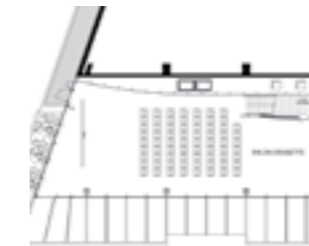
GENERAL
PLAN



PLAN
MEZZANINE



CINEMA



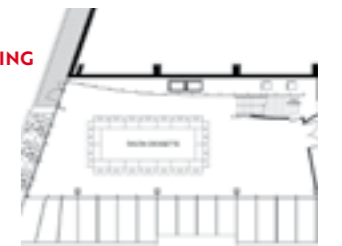
CLASS



CONFERENCE



MEETING



TECHNICAL CHARACTERISTICS

	SURFACE (M ²)	HSP	SCREEN	CINEMA	CLASS	CONFERENCE	MEETING
SALON PIERRE VIOT	146	2,20 / 4,80	5 x 3.10 H.	70	48	76 / 95	40
MEZZANINE	62	2.25	-	-	-	-	-

30 OFFICES ORGANISERS



LEVEL 0 & 1
LEVEL 4 & 5



CONSERVATORY
LEVEL 0

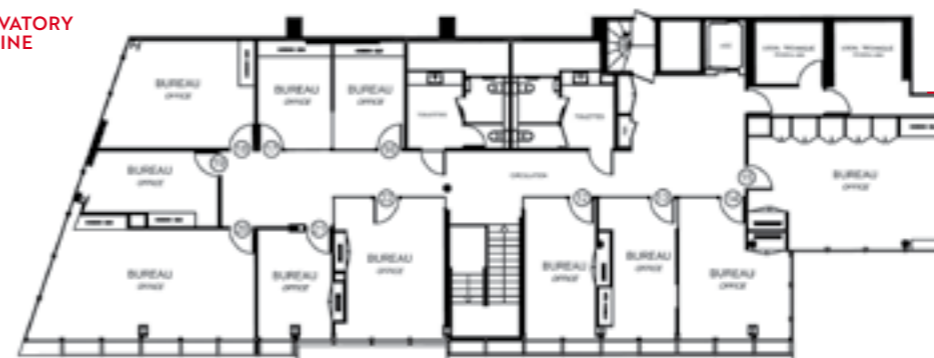


**CONSERVATORY
LEVEL 0**
11 offices

**CONSERVATORY
MEZZANINE**
11 offices

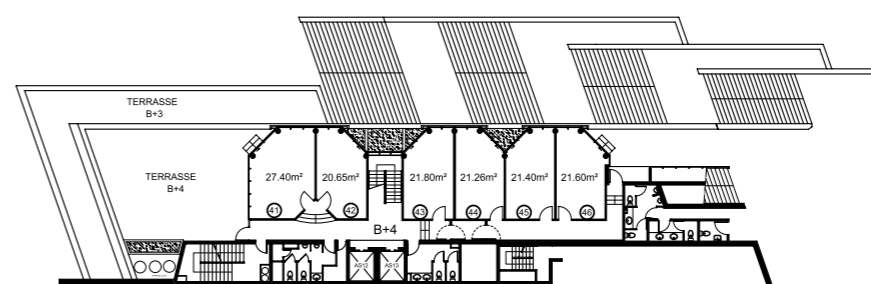
LEVEL 0
6 offices

CONSERVATORY
MEZZANINE

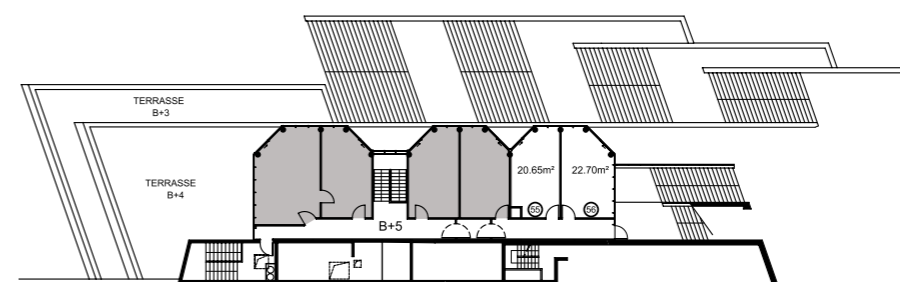


LEVEL 5
2 offices

LEVEL 4

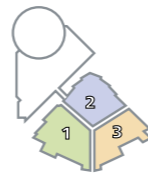


LEVEL 5





35,000
M²
SPACES



HALL EXHIBITIONS



OF EXHIBITION SPACE

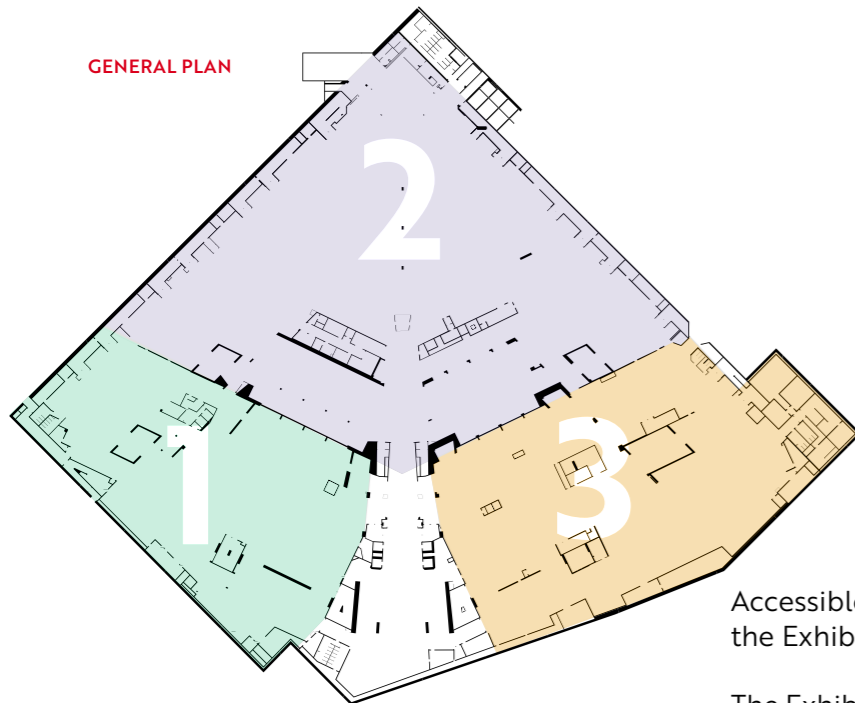


ESPACE RIVIERA



6877
OF EXHIBITION SPACE

GENERAL PLAN



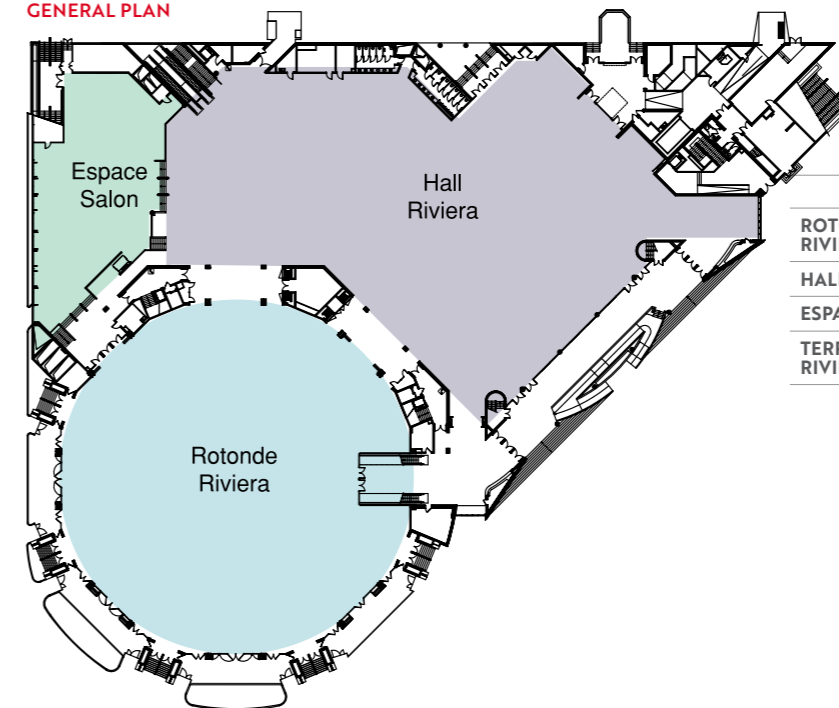
TECHNICAL CHARACTERISTICS

	SURFACE (M²)	HSP
ZONE 1	3,175	2.10 / 2.75
ZONE 2	6,345	2.10 / 2.75
ZONE 3	3,656	2.10 / 2.75
ENTRANCE HALL	580	2.10 / 2.75
ZONES 1+2+3	13,756	2.10 / 2.75

Accessible from the Croisette via the main entrance, the Exhibition Hall covers the whole of level 01.

The Exhibition Hall can be divided into three separate and independent zones or used in its entirety to form a space of almost 14,000 m².

GENERAL PLAN



TECHNICAL CHARACTERISTICS

	SURFACE (M²)	HSP
ROTONDE RIVIERA	2,624	3.25 / 3.80
HALL RIVIERA	3,619	3.75
ESPACE SALON	634	2.68 / 3.00
TERRASSES RIVIERA	323.30	3.40

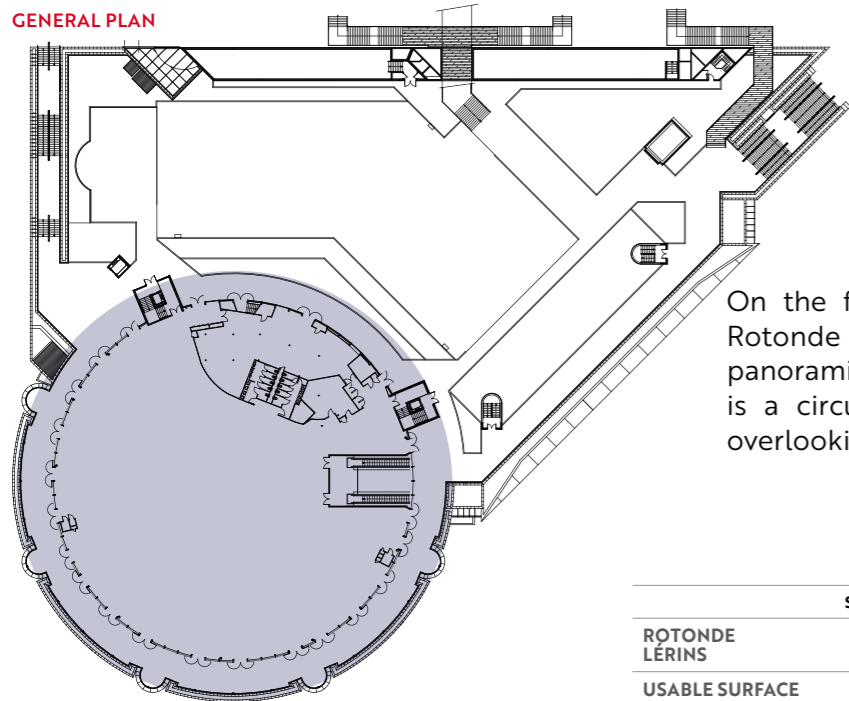


ROTONDE LÉRINS



OF EXHIBITION SPACE

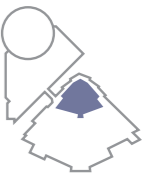
GENERAL PLAN



On the first floor of the Espace Riviera, the Rotonde Lérins is a flexible space with a panoramic view over the Bay of Cannes. It is a circular space surrounded by balconies overlooking the sea.

TECHNICAL CHARACTERISTICS

	SURFACE (m ²)	HSP	MAX. LOAD
ROTONDE LÉRINS	2,600	3.55	500 kg/m ²
USABLE SURFACE	2,150	3.55	500 kg/m ²
OFFICE	450	2.05	500 kg/m ²



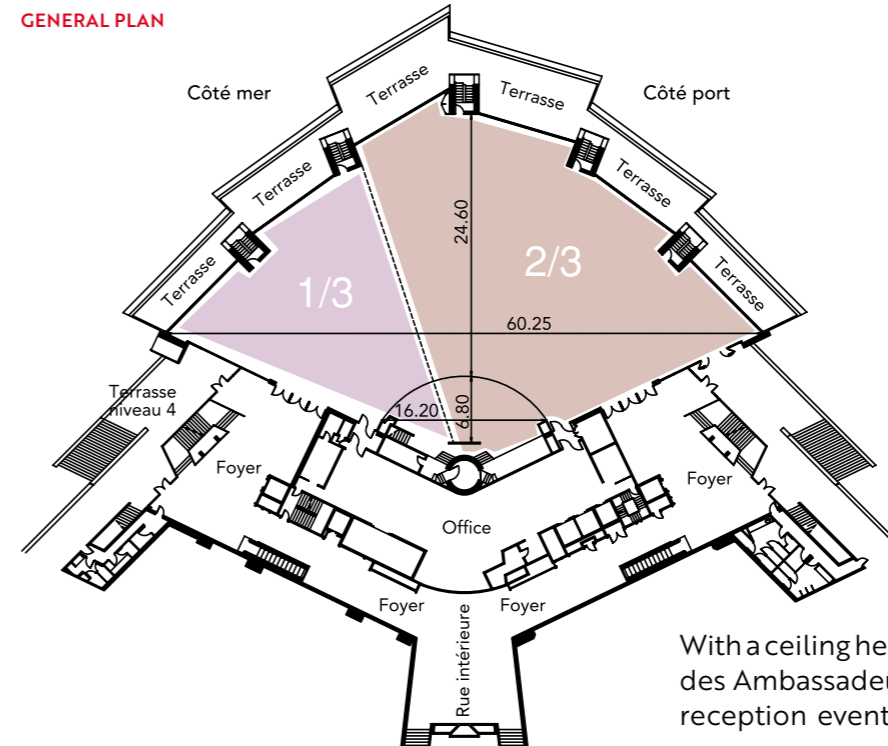
SALON DES AMBASSADEURS



1,127

A PANORAMIC SPACE OVERLOOKING THE OLD PORT AND THE BAY OF CANNES

GENERAL PLAN



TECHNICAL CHARACTERISTICS

	SURFACE (m ²)
1/3 ROOM	373
2/3 ROOM	754
WHOLE ROOM	1,127

	DIMENSION (m)
STAGE	6,68 x 16,62
OPERATING OPENING	11.50

With a ceiling height of 5.50 m and no pillars, the Salon des Ambassadeurs has many advantages for hosting reception events and serving as an exhibition area.



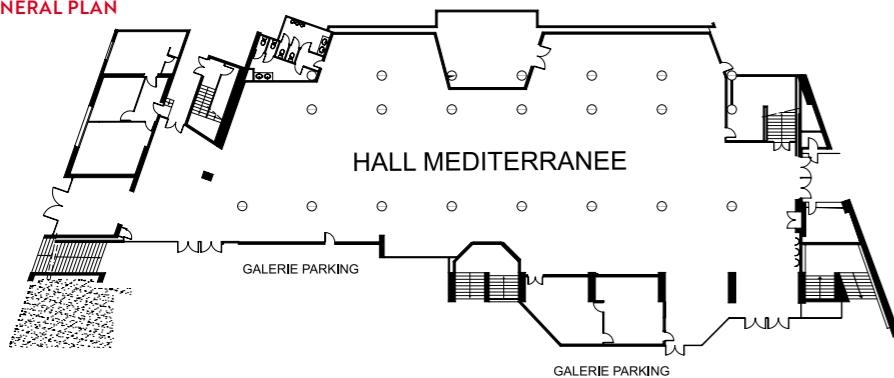
HALL MÉDITERRANÉE

960

OF EXHIBITION
SPACE



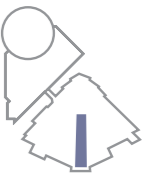
GENERAL PLAN



TECHNICAL CHARACTERISTICS

	SURFACE (m ²)	HSP	MAX. LOAD
HALL MÉDITERRANÉE	960	1.74 / 2.52	400 kg/m ²

The Hall Méditerranée is accessible directly from the esplanade of the Palais des Festivals et des Congrès. It can be used completely independently of other areas.



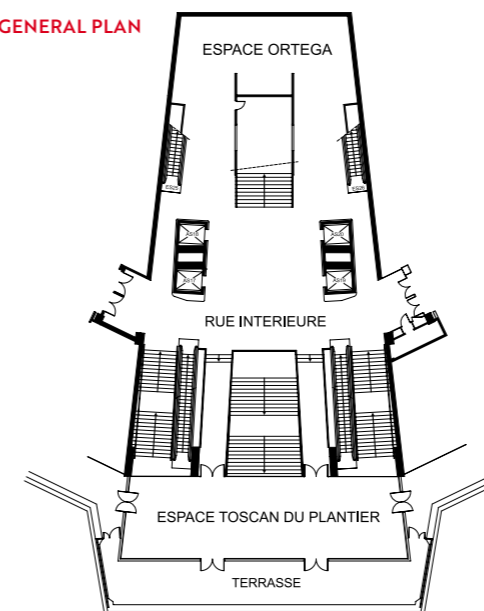
ESPACES TOSCAN DU PLANTIER & ORTEGA

350

OF EXHIBITION
SPACE



GENERAL PLAN



The **Espace Toscan du Plantier** is an exhibition area located above the main entrance, with a terrace overlooking La Croisette.

The **Espace Ortéga** is a complementary exhibition area. These two areas are served by the Rue Intérieure, the main artery between the different areas and levels of the Palais des Festivals.

TECHNICAL CHARACTERISTICS

	SURFACE (m ²)	HSP	MAX. LOAD
TOSCAN DU PLANTIER	170	3.47	500 kg/m ²
ESPACE ORTEGA	180	1.90 / 5.75	500 kg/m ²
RUE INTÉRIEURE, not usable during exhibitions	254	-	-

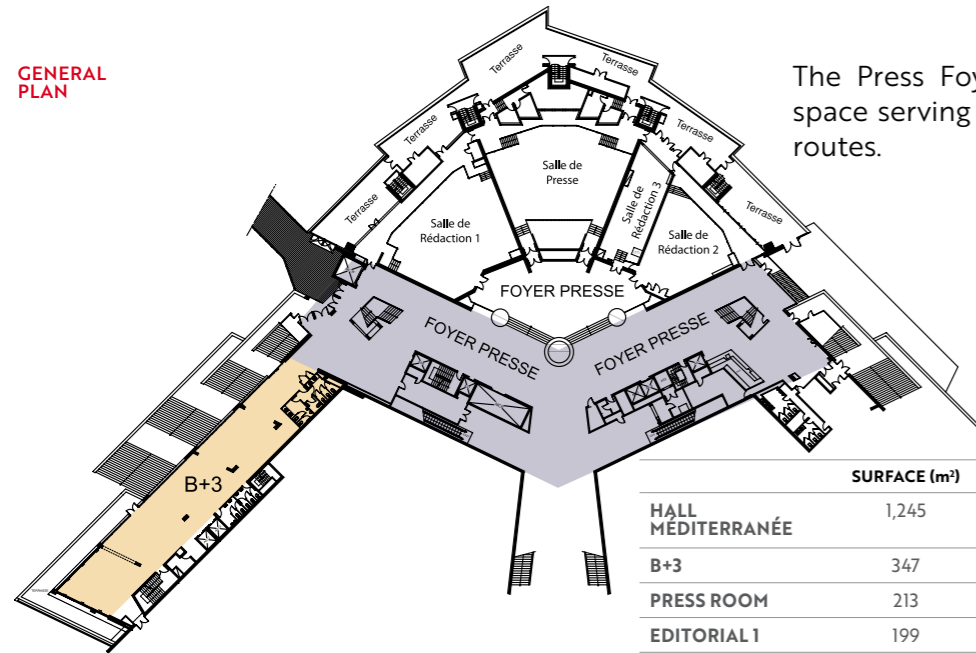


PRESS FOYER & B+3



1,592
OF EXHIBITION
SPACE

GENERAL
PLAN



The Press Foyer and B+3 form a central space serving all the main building's traffic routes.

TECHNICAL
CHARACTERISTICS

	SURFACE (m ²)	HSP	MAX. LOAD
HALL MÉDITERRANÉE	1,245	2.20 / 2.95	500 kg/m ²
B+3	347	2.53	-
PRESS ROOM	213	4.45	-
EDITORIAL 1	199	3.20	-
EDITORIAL 2	120	3.20	-
EDITORIAL	81	2.40	-

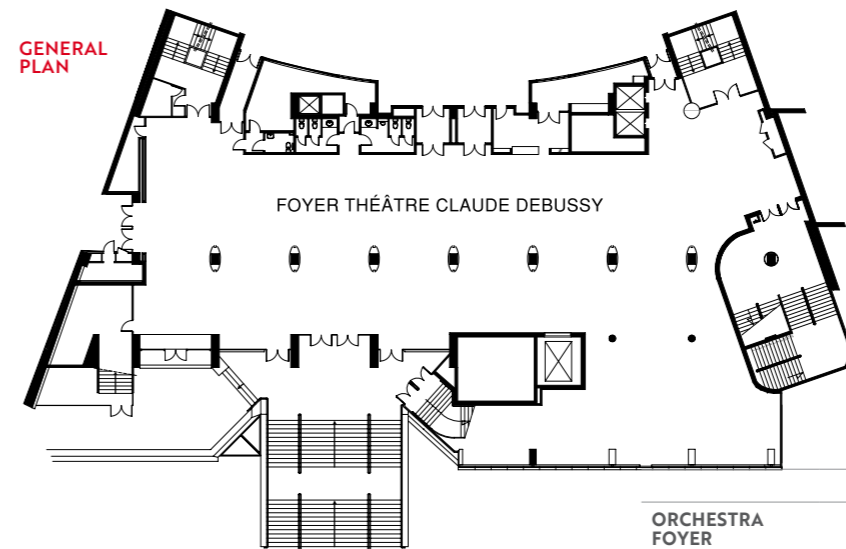


FOYERS - DEBUSSY THEATRE



1,403
OF EXHIBITION
SPACE

GENERAL
PLAN



A modular space for reception and exhibitions, the Foyer of the Théâtre Claude Debussy is accessible directly from La Croisette. It is accessible via the MC 38 freight lift.

TECHNICAL
CHARACTERISTICS

	SURFACE (m ²)	HSP	MAX. LOAD
ORCHESTRA FOYER	845	3.95 / 5.05	400 kg/m ²
BALCONY FOYER	558	2.70	400 kg/m ²
	WIDTH	DEPTH	HEIGHT
MC 38 (CABIN)	2.38	7.35	3.16



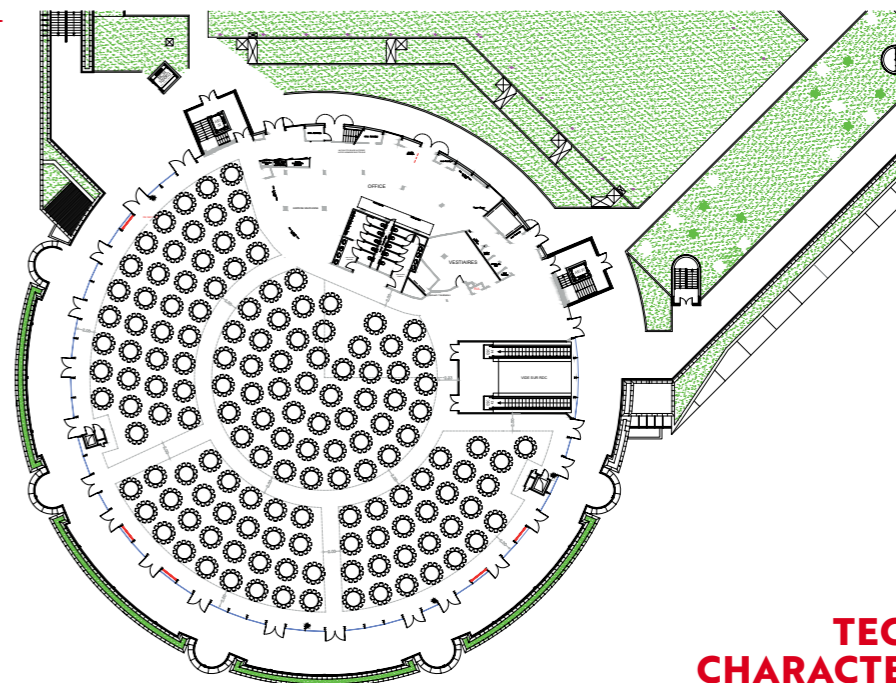
OF EXCEPTIONAL RECEPTION SPACES

ROTONDE LÉRINS

LEVEL 1



GENERAL PLAN



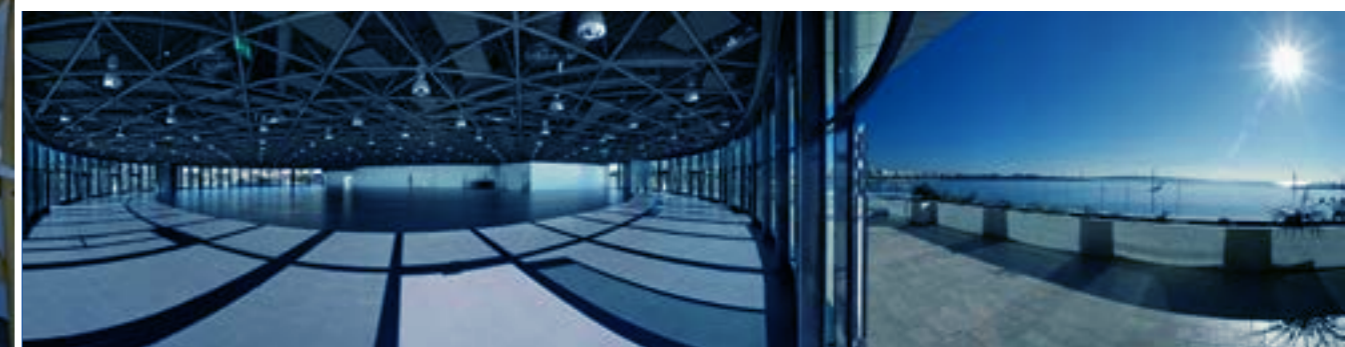
TECHNICAL CHARACTERISTICS

	SURFACE (m ²)	HSP	MAX. LOAD	CAPACITY - CATERING	CAPACITY - COCKTAIL
ROTONDE LÉRINS	2,150	3.55	500 kg/m ²	1,728	3,308

1,728
PEOPLE

THE LARGEST PANORAMIC
RECEPTION AREA ON THE CÔTE
BREATHTAKING 360° PANORAMIC VIEW OF
THE BAY OF CANNES

A SPACE FOR THE MOST PRESTIGIOUS
GALA EVENINGS



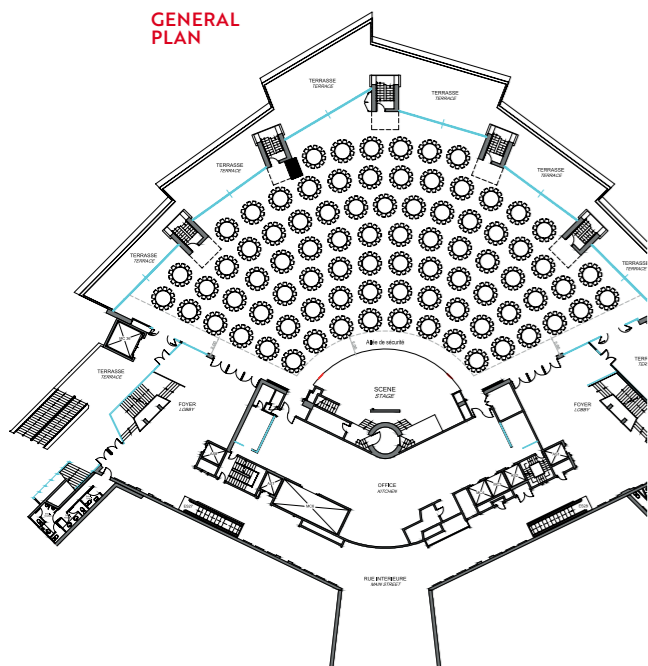


SALON DES AMBASSADORS

996
PEOPLE



GENERAL PLAN



a prestigious room with panoramic views over the bay of Cannes, the old port and the Suquet, will give your receptions a unique and unforgettable character.

TECHNICAL CHARACTERISTICS

PORTION OF THE ROOM	SURFACE (m ²)	HSP	MAX. LOAD	CAPACITY - CATERING	CAPACITY - COCKTAIL
1/3 ROOM	373	-	-	276	500
2/3 ROOM	754	-	-	672	1,500
WHOLE ROOM	1,127	4.15 / 5.65	500 kg/m ²	996	2,500
STAGE	81	-	-	-	-
FOYER	595	2.15 / 2.30	500 kg/m ²	-	-
TERRACE	358	-	-	-	400



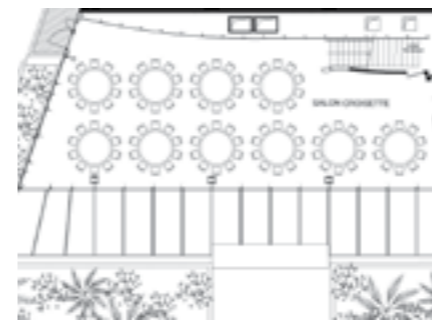
SALON PIERRE VIOT

1000
PEOPLE

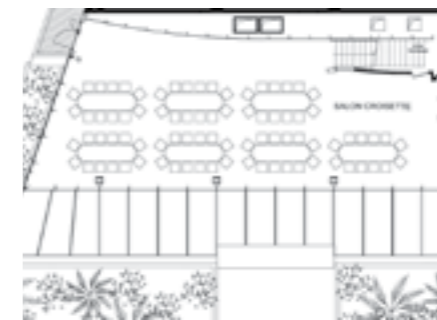


A NEW SPACE FOR RECEPTIONS AND COCKTAILS

RECEPTION ROUND TABLES



RECEPTION OVAL TABLES



TECHNICAL CHARACTERISTICS

	SURFACE (m ²)	HSP	SCREEN	CATERING	- COCKTAIL
SALON PIERRE VIOT	146	2.20 / 4.80	5 X 3,10	84 à 100	300



ROTONDE RIVIERA

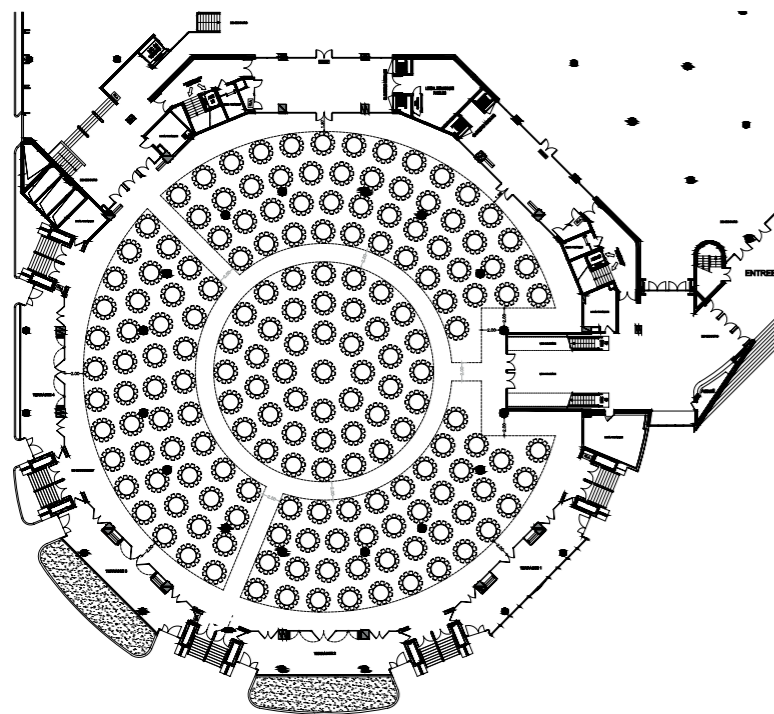
2100

PEOPLE

A MODERN SPACE FOR LARGE-SCALE RECEPTIONS



GENERAL PLAN



Located on the ground floor of the Espace Riviera, the Rotonde Riviera is a circular space with flat access to the beach. Its terraces overlook the sea and Cannes harbour.

This is a reception area that can complement the Hall Riviera.

TECHNICAL CHARACTERISTICS

	SURFACE (m ²)	HSP	CAPACITY - CATERING
ROTONDE RIVIERA	2,624	3,25/3,80	2,100
TERRACES RIVIERA	324	3.40	-



HALL RIVIERA

1608

PEOPLE



ON THE EDGE OF THE BEACH,
THE ESPACE RIVIERA BOASTS PANORAMIC VIEWS AND EXCEPTIONAL NATURAL LIGHT

TECHNICAL CHARACTERISTICS

	SURFACE (m ²)	HSP	CAPACITY - CATERING
HALL RIVIERA	3,619	3.75	1,608



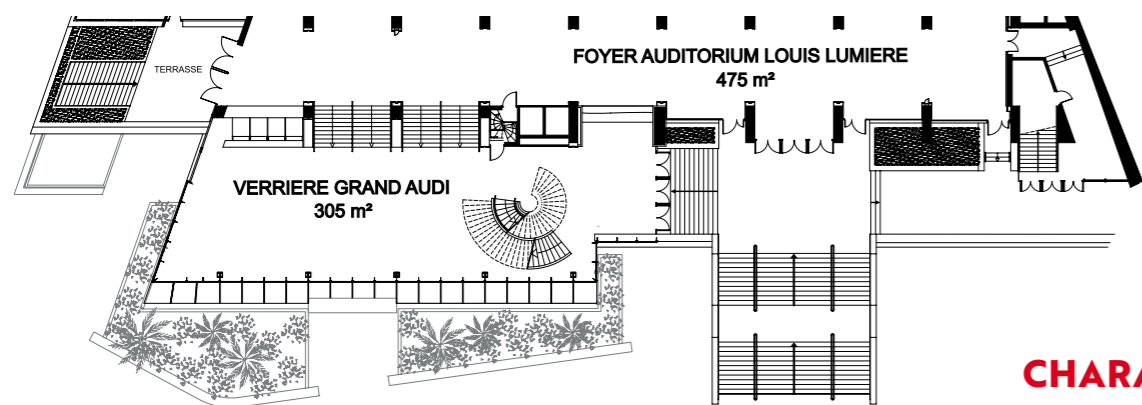
FOYERS - GRAND AUDITORIUM LOUIS LUMIÈRE



people for cocktails

ACCESSIBLE VIA THE FAMOUS STEPS OF THE PALAIS DES FESTIVALS, THE VERRIÈRE DU FOYER GRAND AUDITORIUM LOUIS LUMIÈRE IS A MULTI-PURPOSE SPACE IDEAL FOR COCKTAILS AND RECEPTIONS.

GENERAL PLAN



TECHNICAL CHARACTERISTICS

	SURFACE (m²)	HSP	EXCESS	CAPACITY COCKTAILS
ORCHESTRA + CONSERVATORY FOYER	780	2,30/5,80	400 kg/m²	1,550



FOYERS - THEATRE CLAUDE DEBUSSY

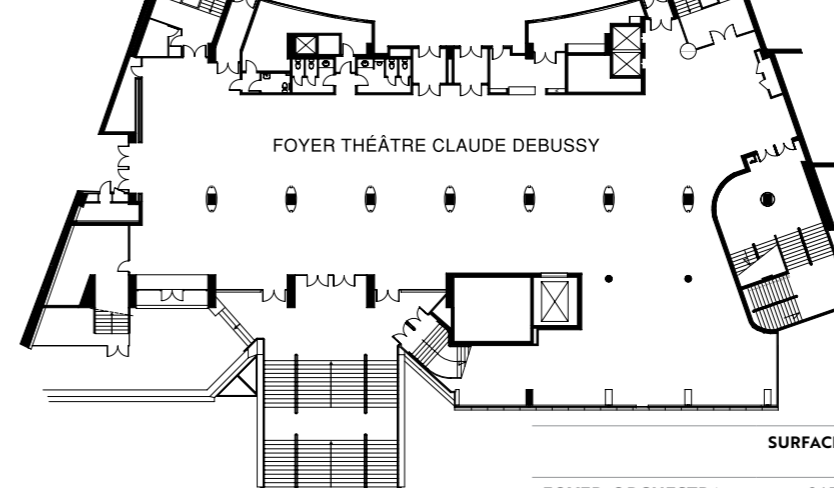


1,768

people for cocktails

MODULAR SPACE FOR COCKTAIL RECEPTIONS AT THE ENTRANCE TO THE THÉÂTRE CLAUDE DEBUSSY AND WITH

GENERAL PLAN



TECHNICAL CHARACTERISTICS

	SURFACE (m²)	HSP	EXCESS	CAPACITY COCKTAILS
FOYER-ORCHESTRA	845	3,95/5,05	400 kg/m²	1,768
BALCONY FOYER -	558	2,70	400 kg/m²	1,122

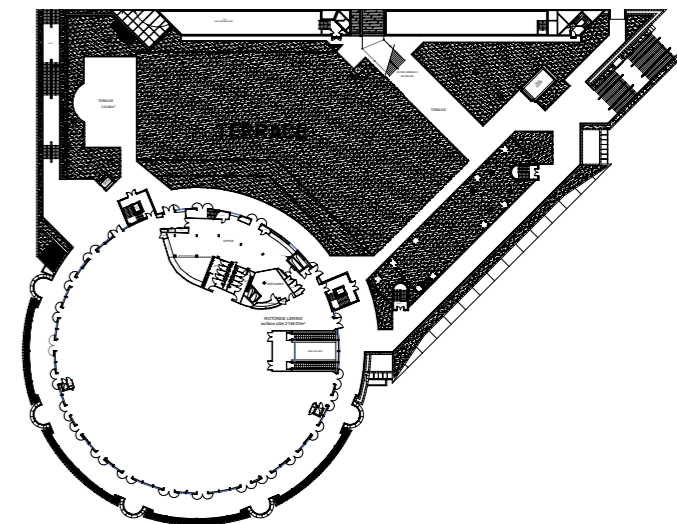
11 TERRACES
5,774

M²

RECEPTIONS, CONCERTS,
OPEN-AIR FESTIVALS



GENERAL
PLAN



LEVEL 1



CONTACT SALES AND DIGITAL

RÉGIS FAURE

Sales and Digital Projects Director

+33 (0)4 92 99 84 44

r.faure@palaisdesfestivals.com

ALIKI HEINRICH

Director of Business Tourism (MICE)

+33 (0)4 92 99 84 18

heinrich@palaisdesfestivals.com

UGO D'AGOSTINO

Sales Manager

+33 (0)4 92 99 31 61

dagostino@palaisdesfestivals.com

GABRIELLE EVREVIN

Sales Manager

+33 (0)4 92 99 84 33

muller@palaisdesfestivals.com

JULIE AMEDEO

Sales Manager

+33 (0)4 92 99 31 66

amedeo@palaisdesfestivals.com

ISABELLE MULLER

MICE Project Manager

+33 (0)4 92 99 84 30

muller@palaisdesfestivals.com

MARJORIE PAULMIER

MICE Project Manager

+33 (0)4 92 99 84 19

paulmier@palaisdesfestivals.com

BERTRAND PASTOR

MICE Sales Manager

+33 (0)4 92 99 84 58

pastor@palaisdesfestivals.com

REPRESENTATIVE OFFICES
BUSINESS TOURISM (MICE)

PHILIPPA DURRANT

USA

+212 98 91 440

philippa@arenadestinationmanagement.com

CANNES CONVENTION

FABIENNE CESSIN

MICE Project Manager

+33 (0)4 92 99 31 55

cessin@palaisdesfestivals.com

Notes section with horizontal dotted lines for writing.

MY FIRST EVENT

THE NECESSARY STEPS

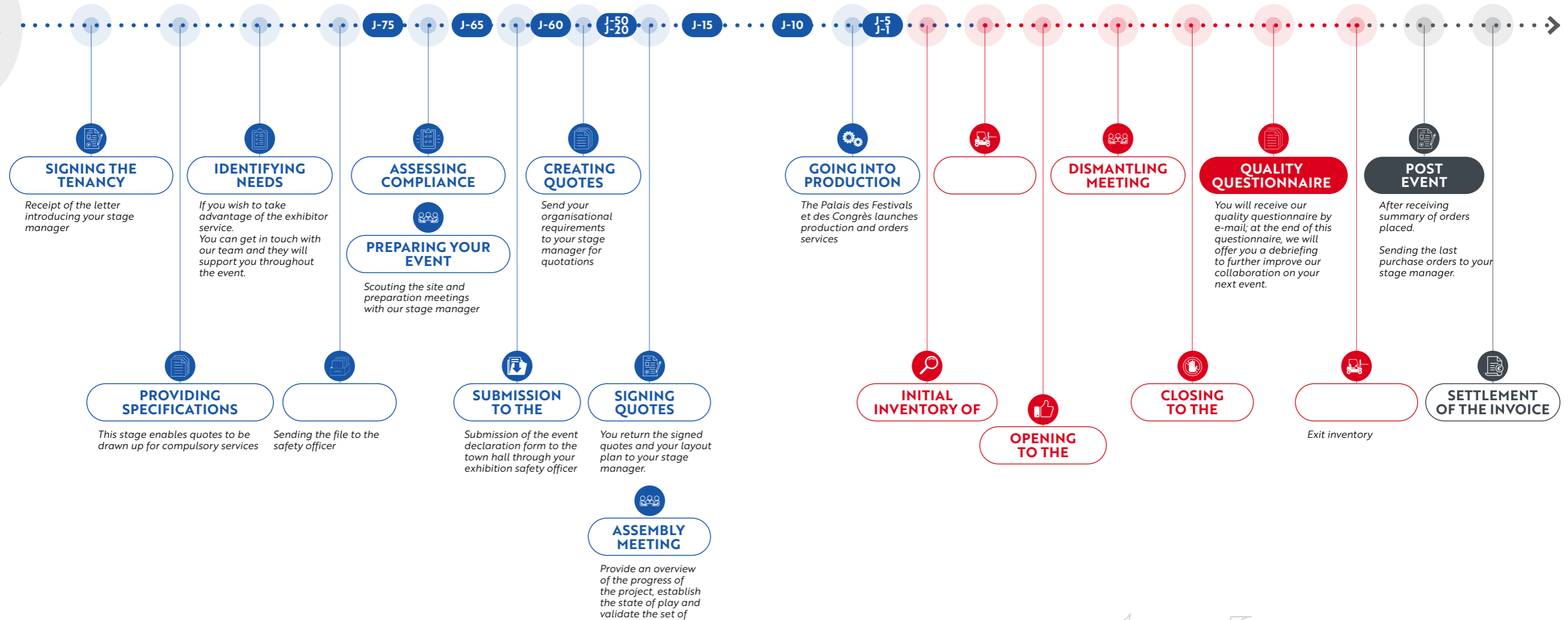
PREPARING YOUR EVENT

Scouting the site and preparation meetings with our stage manager

OCCUPANCY PERIOD

Your stage manager remains your special contact throughout your event.

MAKING CONTACT



SOME HAPPY CUSTOMERS





**PALAIS DES
FESTIVALS
ET DES CONGRÈS
CANNES**

www.palaisdesfestivals.com

MAY 2024

