



# CANNES

CONVENTION &  
VISITORS BUREAU



SEMEC  
A PUBLIC-PRIVATE  
PARTNERSHIP FOR EVENTS  
IN CANNES

# The SEMEC

The **Cannes Convention Center** is a public facility, owned by the **City of Cannes**, and the SEMEC is its exclusive operator.

CANNES  
CONVENTION &  
VISITORS BUREAU

October

199

FOUNDED

1

80%

MAJORITY PUBLIC  
SHAREHOLDING

1<sup>ST</sup> ORGANIZATION

FOR TOURISM & LEISURE  
IN THE ALPES-MARITIMES IN 2022

1<sup>ST</sup>

FOR SERVICE  
IN FRANCE

# The SEMEC

SEMEC

**A PUBLIC-PRIVATE  
PARTNERSHIP FOR EVENTS  
IN CANNES**

DEVELOP	PROMOTE	ORGANIZE	OPERATE
<p><b>Manage and develop tourism hospitality, event organization and business meetings (trade fairs, congresses, festivals) with a strong international scope</b></p>	<p><b>Promote the CANNES destination, and strengthen tourist numbers in the Cannes area via the Tourist Office and the Convention Bureau</b></p>	<p><b>Organize cultural events in line with the cultural policy of the City of Cannes</b></p>	<p><b>Operate and maintain public infrastructure in an excellent state of maintenance and operation</b></p>

SEMEC  
A PUBLIC-PRIVATE  
PARTNERSHIP FOR EVENTS  
IN CANNES

# The SEMEC

1991 > 2030  
*public service delegation*

A capital of  
2,400,000 euros

Key figures in **2022**

41.

MILLIONS EUROS  
IN SALES REVENUE

5

14

EVENTS  
(INCLUDING 61 BUSINESS  
EVENTS)

0

87

MILLIONS EUROS  
IN ECONOMIC IMPACT

7

520,889

OVERNIGHT STAYS

19

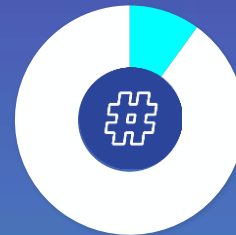
PERMANENT STAFF

0

# Sustainably welcomes the world.

A CONGRESS  
**CENTER**  
WITH A MISSION

3 goals



Connect  
#Cannes



Take care of  
&Cannes



Showcase Talent  
@Cannes

 Label



Certifications



**9001**  
Quality  
Management



**18788**  
Safety  
and Security



**20121**  
Events for  
Sustainability  
Development



Tourism  
& Disability

**AN  
INTERNATIONAL  
BUSINESS  
DESTINATION**

MORE THAN

**70**

YEARS OF EXPERIENCE IN TOURISM &  
PRESTIGIOUS INTERNATIONAL  
EVENT ORGANIZATION



**35,000**  
SQUARE METERS  
OF EXHIBITS



**14,000**  
ROOMS



**0**  
TRANSFERS



**320 DAYS**  
OF SUNSHINE  
PER YEAR

# AN EASY-TO-ACCESS DESTINATION

CANNES  
CONVENTION &  
VISITORS BUREAU



#2<sup>ND</sup>  
MAJOR AIRPORT  
IN FRANCE



114  
DESTINATIONS



25min  
DRIVE FROM NICE  
CÔTE D'AZUR  
AIRPORT



10min  
DRIVE FROM CANNES  
MANDELIEU AIRPORT



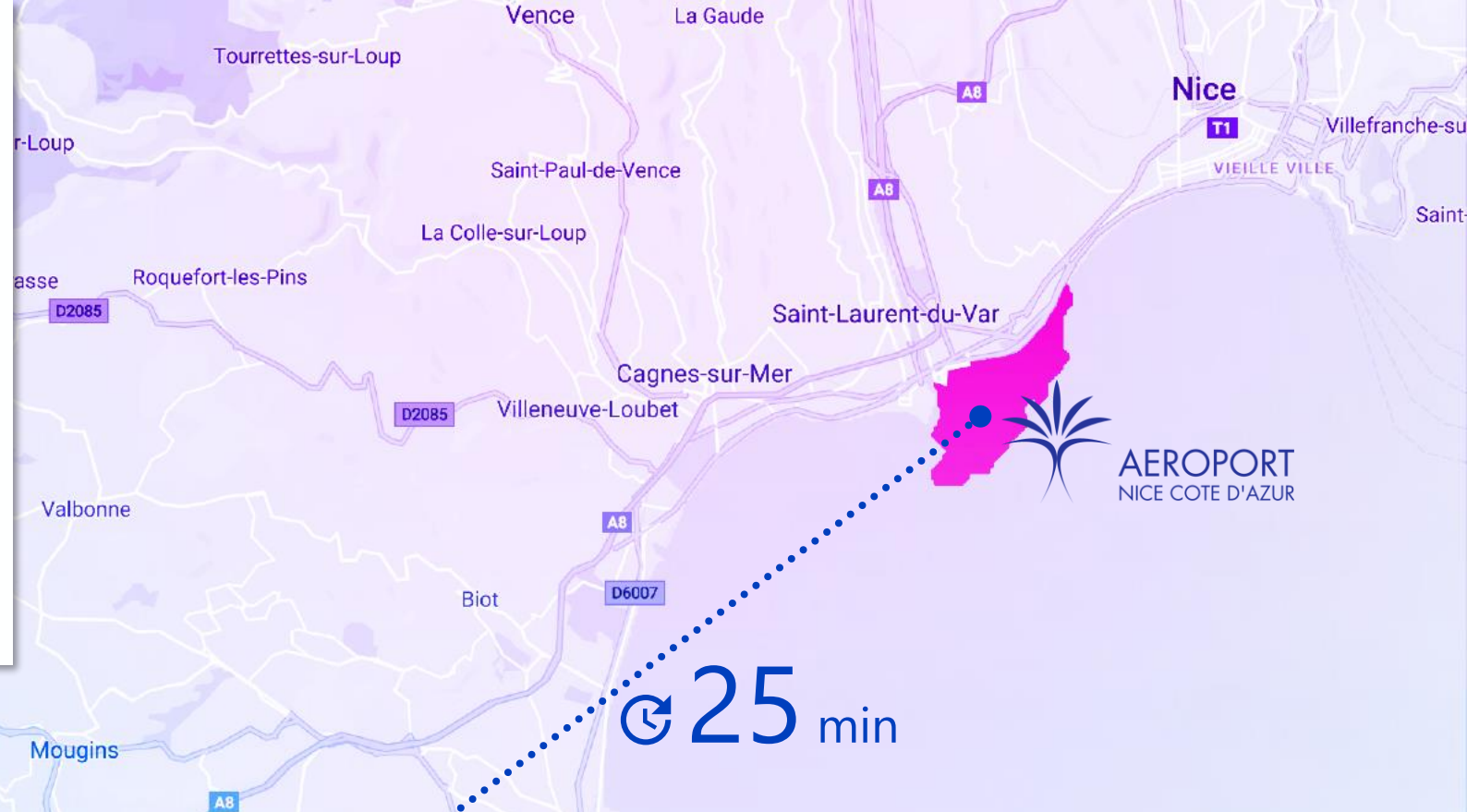
7 min  
by foot  
FROM THE TGV  
TRAIN  
STATION



A8  
AUTOROUTE



# A GLOBAL VILLAGE



🕒 25 min



**CANNES**  
CONVENTION &  
VISITORS BUREAU



14.000  
WIDE-RANGING  
AND QUALITY  
ACCOMMODATIONS



7.400  
Rooms



+120  
Hotels

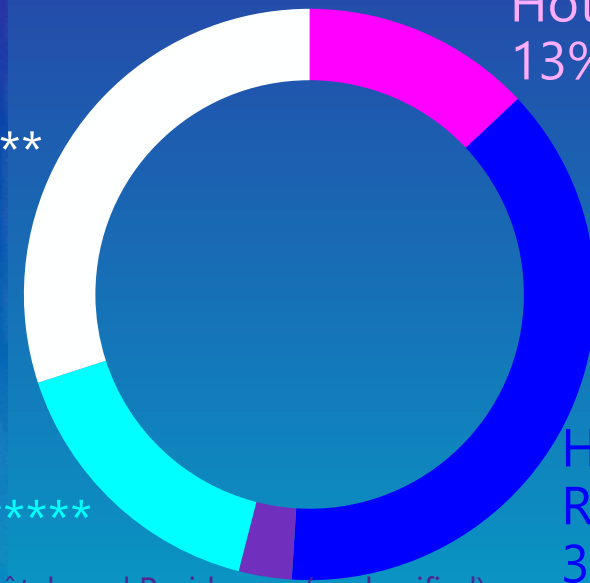
Hotels and  
Residences\*\*\*\*  
30%

Hotels\*\*\*\*\*  
16%

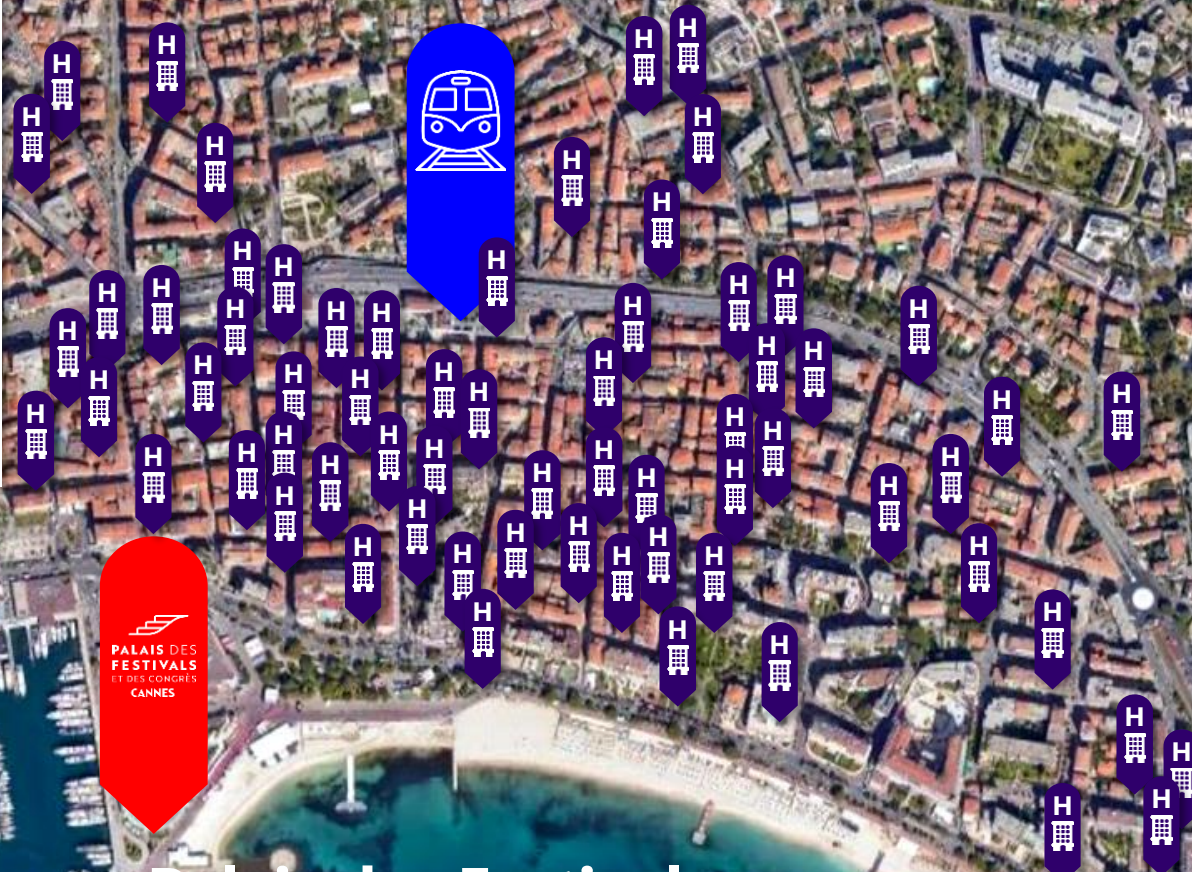
Hôtels and Residences (unclassified)  
3%

Hotels\*\*  
13%

Hotels and  
Residences\*\*\*  
38%



RECOMMENDED  
ACCOMMODATION  
WITHIN WALKING  
DISTANCE



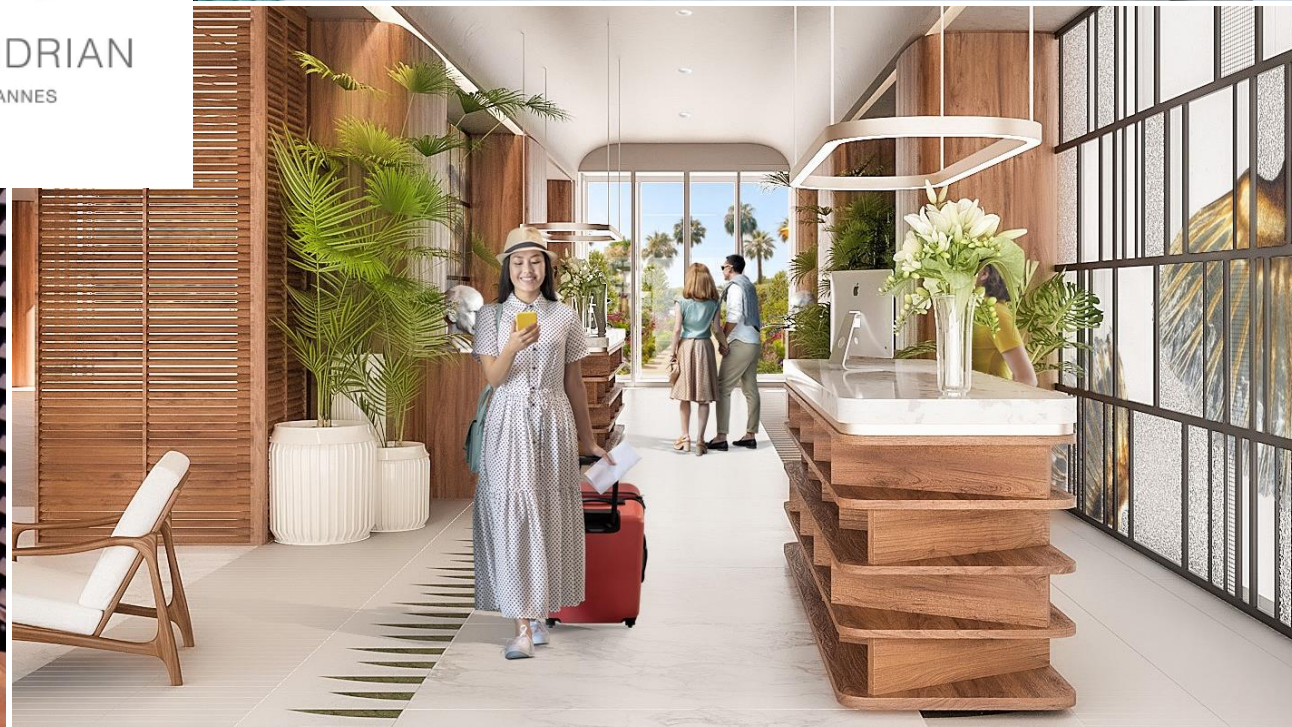
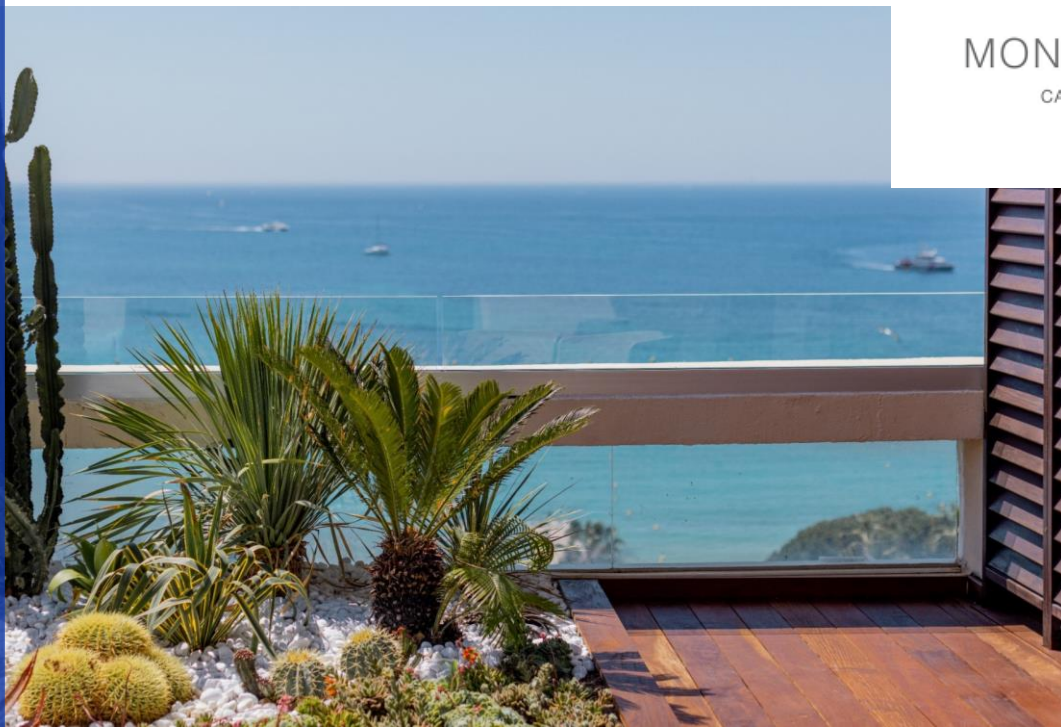
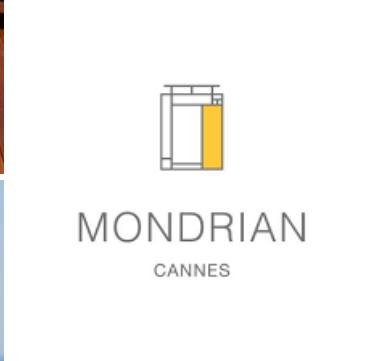
Palais des Festivals  
et des Congrès de Cannes

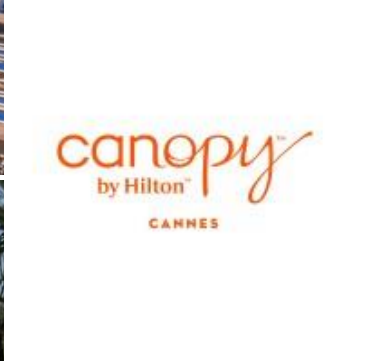


# CARLTON CANNES

CANNES  
CONVENTION &  
VISITORS BUREAU









**CANNES**  
CONVENTION &  
VISITORS BUREAU



**B**  
HOTEL BARRIÈRE  
**LE MAJESTIC**  
CANNES



**CANNES**  
CONVENTION &  
VISITORS BUREAU



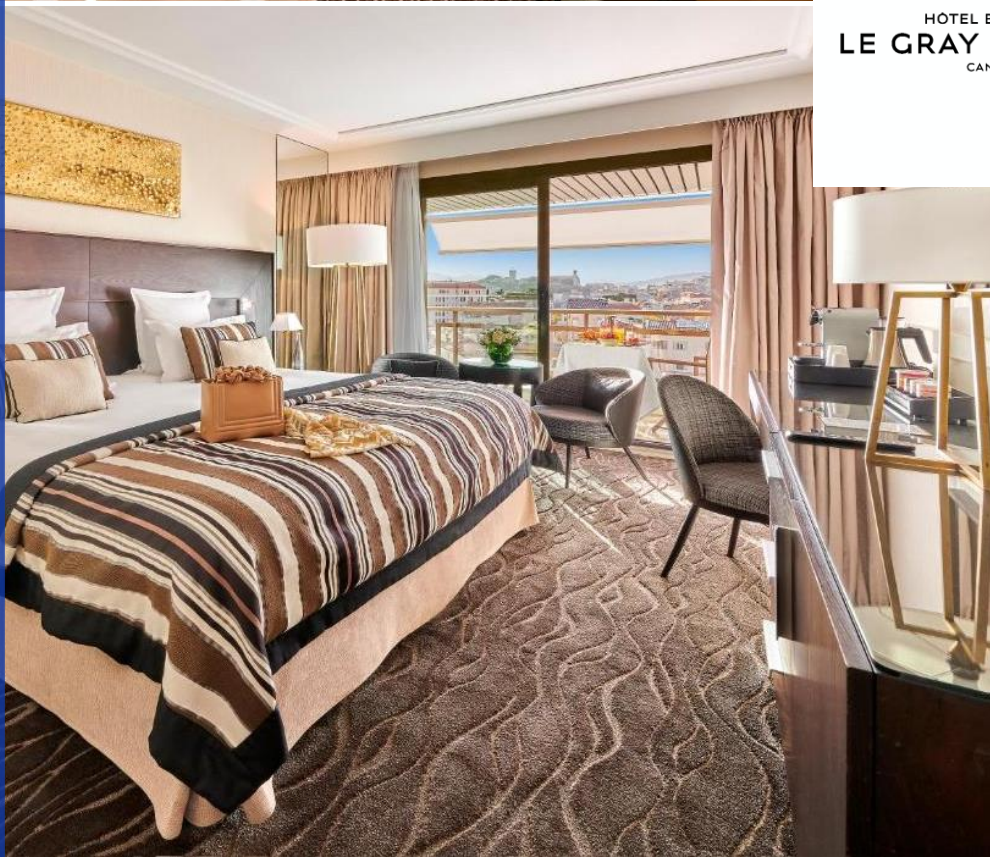
**Palm Beach**  
CANNES

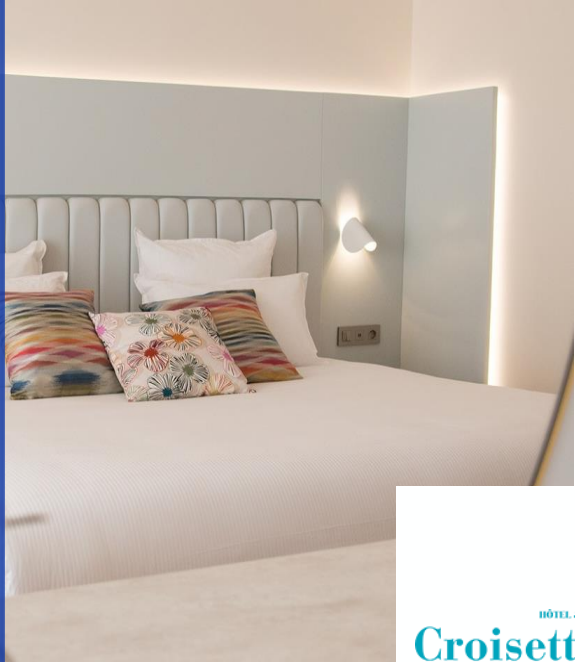


**CANNES**  
CONVENTION &  
VISITORS BUREAU



**B**  
HOTEL BARRIÈRE  
LE GRAY D'ALBION  
CANNES





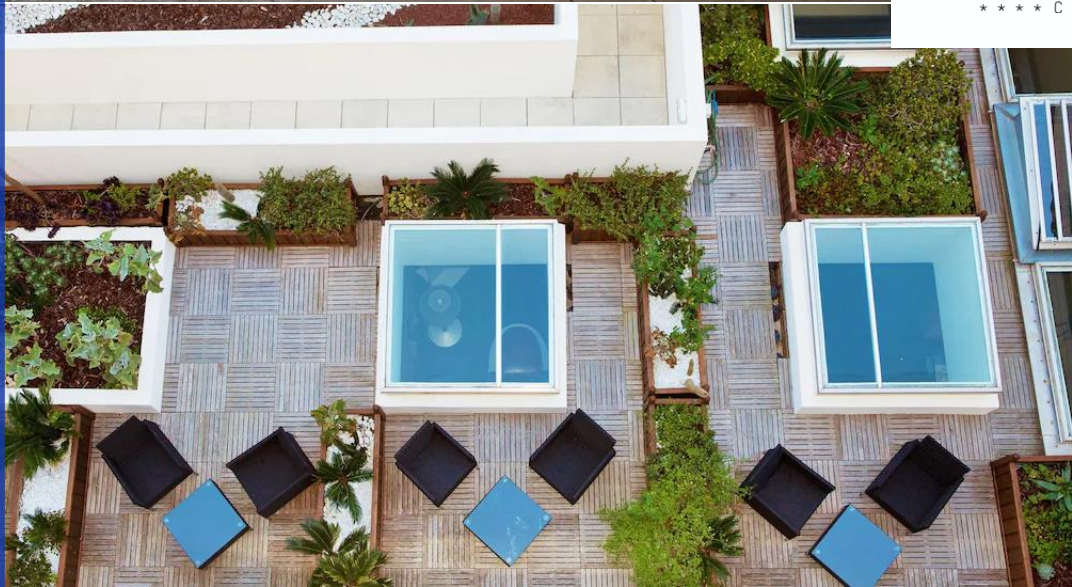
HÔTEL & PLAGE  
**Croisette Beach**



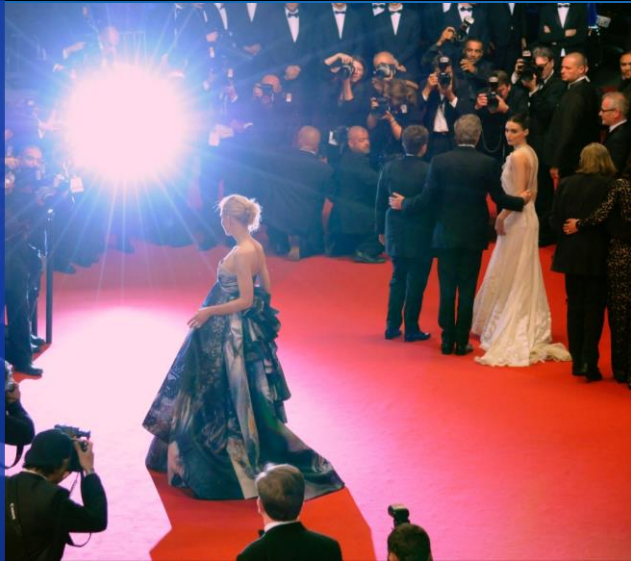


  
**BELLE PLAGE**  
HÔTEL - SPA - RÉSIDENCE





# Event and cultural venues



CANNES  
CONVENTION &  
VISITORS BUREAU



bâoli™

CANNES

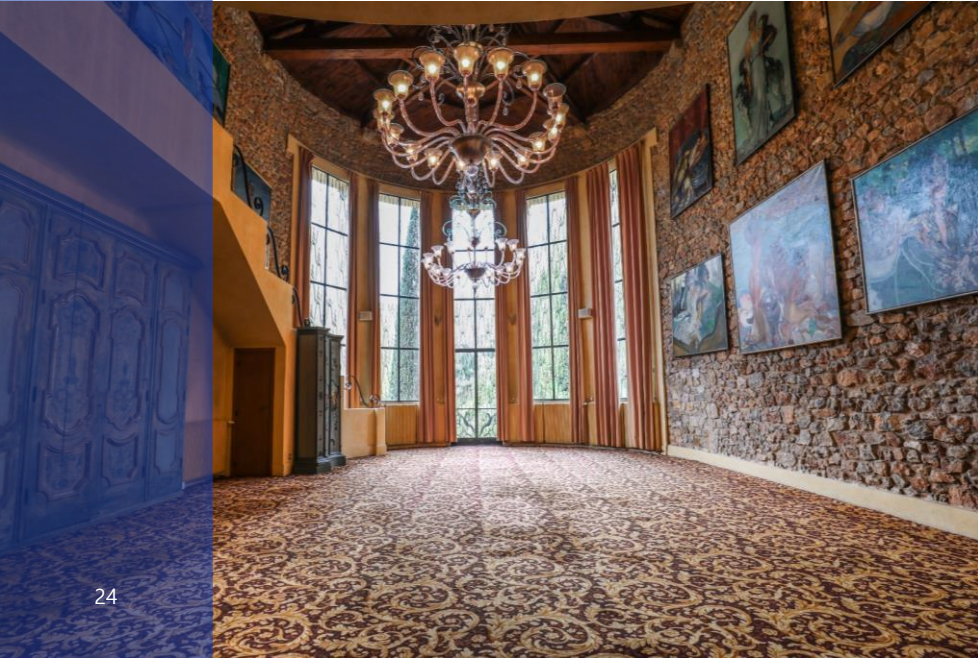




**CANNES**  
CONVENTION &  
VISITORS BUREAU



La Villa Domergue





# Château de la Napoule

CANNES  
CONVENTION &  
VISITORS BUREAU



# Incentives

**CANNES**  
CONVENTION &  
VISITORS BUREAU



# Incentives

CANNES  
CONVENTION &  
VISITORS BUREAU



# 24 PRIVATE BEACHES ON THE CROISSETTE

CANNES  
CONVENTION &  
VISITORS BUREAU

• for receptions  
of up to  
**4,000** guests







# THE LÉRINS ISLANDS

# SAINT-HONORAT ISLAND





# PALAIS DES FESTIVALS ET DES CONGRÈS CANNES



PALAIS DES  
FESTIVALS  
ET DES CONGRÈS  
CANNES

# WORLD LEADER



WORLD  
TRAVEL  
AWARDS

# 50

MEETING  
ROOMS

# 35,000

SQUARE METERS  
OF EXHIBIT SPACE

# 4

AMPHITHEATERS

FOR 150  
TO 2.300  
GUESTS

# over 140

EVENTS PER YEAR

# 1

DIGITAL

PLUG & PLAY  
STUDIO

FOR  
320  
GUESTS

1 CONGRESS CENTER AND  
1 DESTINATION

# CONNECTED

# 3

RECEPTION  
ROOMS

FOR UP TO  
3,300  
GUESTS



Plages

Jardins

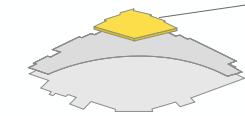
# GENERAL OVERVIEW OF SPACES

**PALAIS DES FESTIVALS ET DES CONGRÈS CANNES**



**PALAIS DES FESTIVALS ET DES CONGRÈS CANNES**

LEVEL 6



OPEN SEA TERRACE

LEVEL 5



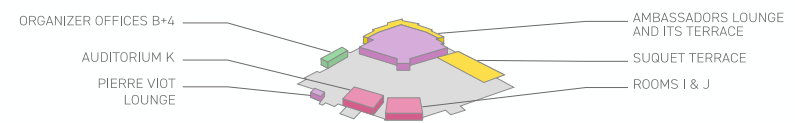
ORGANIZER OFFICES B+5

CROISSETTE LOUNGE MEZZANINE

HI5 STUDIO

CALIFORNIA ATRIUM AND ITS TERRACE

LEVEL 4



ORGANIZER OFFICES B+4

AUDITORIUM K

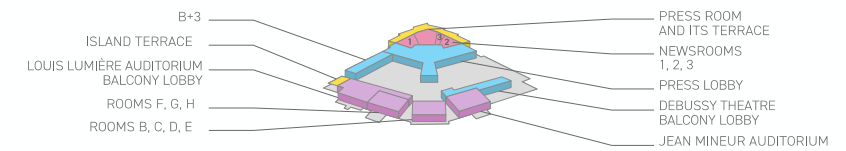
PIERRE VIOT LOUNGE

AMBASSADORS LOUNGE AND ITS TERRACE

SUQUET TERRACE

ROOMS I & J

LEVEL 3



B+3

ISLAND TERRACE

LOUIS LUMIÈRE AUDITORIUM BALCONY LOBBY

ROOMS F, G, H

ROOMS B, C, D, E

PRESS ROOM AND ITS TERRACE

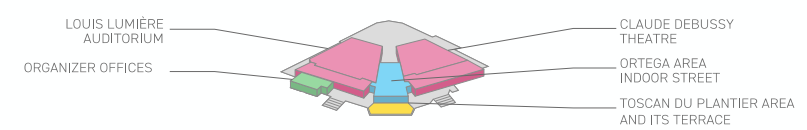
NEWSROOMS 1, 2, 3

PRESS LOBBY

DEBUSSY THEATRE BALCONY LOBBY

JEAN MENEUR AUDITORIUM

LEVEL 1



LOUIS LUMIÈRE AUDITORIUM

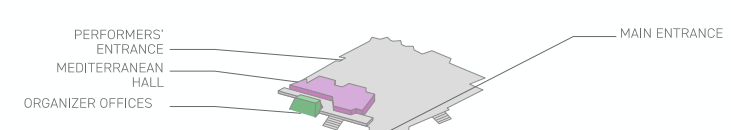
ORGANIZER OFFICES

CLAUDE DEBUSSY THEATRE

ORTEGA AREA INDOOR STREET

TOSCANI DU PLANTIER AREA AND ITS TERRACE

LEVEL 0



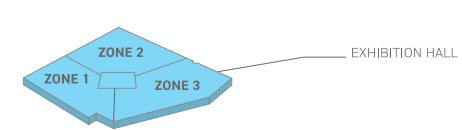
PERFORMERS' ENTRANCE

MEDITERRANEAN HALL

ORGANIZER OFFICES

MAIN ENTRANCE

LEVEL -1



ZONE 2

ZONE 1

ZONE 3

EXHIBITION HALL

- CONFERENCE
- EXHIBITION
- GALA, RECEPTION/MULTI-PURPOSE
- OFFICES
- TERRACE

# LOUIS LUMIÈRE GRAND AUDITORIUM

# 2,309 SEATS

ORCHESTRA

758

SEATS

BOX

34

SEATS

BALCONY

1,454

SEATS

+ 60

FOLDING SEATS

+ 1

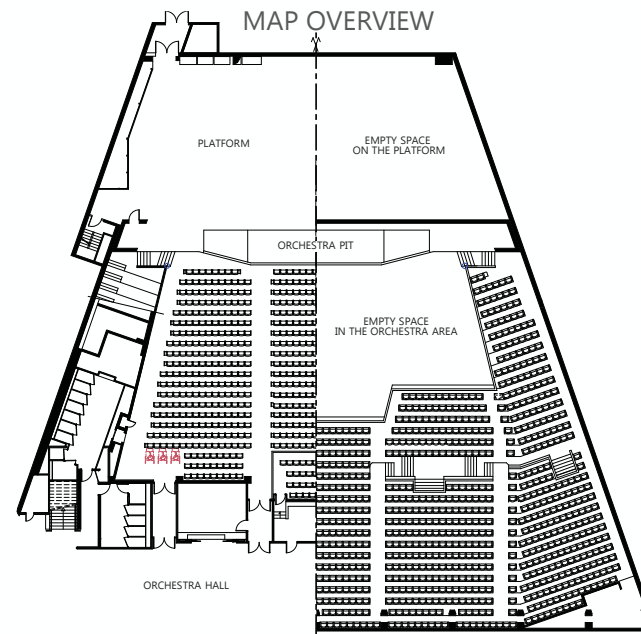
FOLDING SEAT

+ 2

FOLDING SEATS



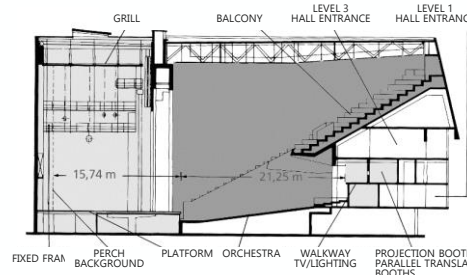
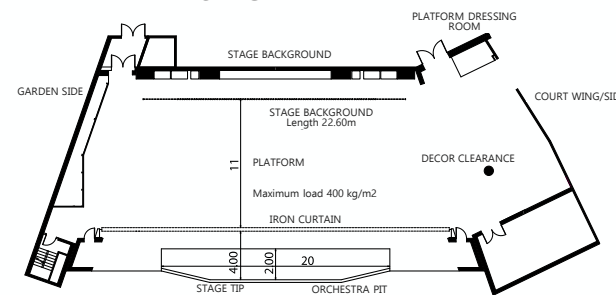
Levels 1 & 3



## TECHNICAL SPECIFICATIONS

	SURFACE (m <sup>2</sup> )	DIMENSIONS (m)	QUANTITY
Stage	383	16.75 depth	-
Orchestra Pit	56	2.80 H.	-
Modular stage frame	-	24.70 W. x 11.20 H. max.	-
Carriers	-	-	42
Track lighting	-	-	5
Portable screen	-	6 W. x 4.50 H.	1
Cyclo Mobile	-	22 W. x 9 H.	1
Backstage area	190	-	-
MC6 freight elevator	-	2.28 W. x 7.20 depth. x 3.16 H.	1
<b>TOTAL</b>	<b>640</b>	-	-

## STAGE MAP



## STAGE

Stage tip depth to the stage distance	16.75 m
Total opening front/22m distance	24.70 m
Standard opening	18 m
Height under grill	18 m
Ground load distribution	400 kg/m <sup>2</sup>
Parallel translation	6 languages
Infrared system	

The Louis Lumière Auditorium is accessible behind the stage by the MC6 freight elevator.

## MC6

Booth	2.28 W. x 7.20 depth. x 3.16 H.
Max. load	3 000 kg

# CLAUDE DEBUSSY THEATER

# 1,068 SEATS

ORCHESTRA

616 SEATS

+ 64 FOLDING SEATS

BALCONY

388 SEATS

ARMCHAIRS WITH TRAY TABLES (NON FOLDING SEATS)



## Levels 1 & 3

### TECHNICAL SPECIFICATIONS

	SURFACE (m <sup>2</sup> )	DIMENSIONS (m)	QUANTITY
Stage	265	13.70 depth.	-
Orchestra Pit	47	-	-
Modular Stage frame	-	19.15 W. x 7.50 H. max.	-
Carriers	-	18 length.	44
Track lighting	-	-	4
Portable screen	-	6 W. x 4.50 H.	1
Cyclo mobile	-	16 W. x 8 H.	1
Backstage area	90	-	-
MC6 freight elevator	-	2.28 W. x 7.20 depth. x 3.16 H.	1

### STAGE

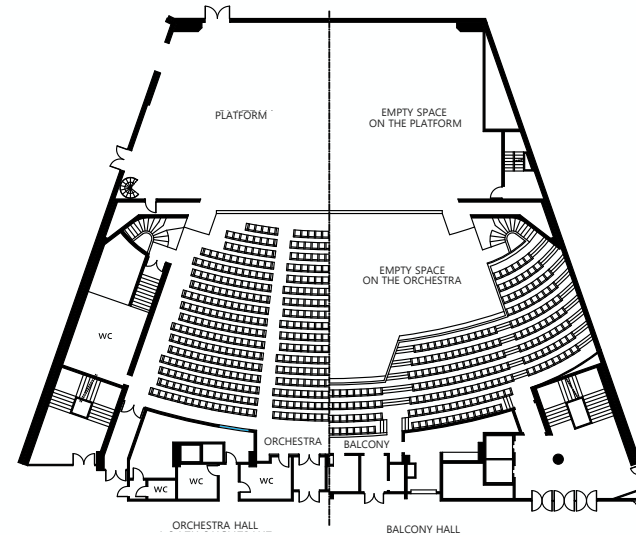
Stage tip depth to the stage distance	16.75 m
Maximum opening	19.15 m face
Maximum utilization	14 m
Height under grill	17.40 m
Poke	18 m
Ground load distribution	400 kg/m <sup>2</sup>
Parallel translation	6 languages
Infrared system	

The Debussy Auditorium is accessible backstage by the MC6 freight elevator

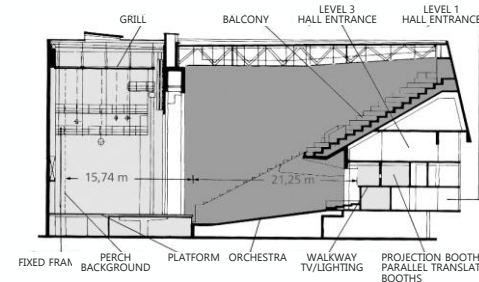
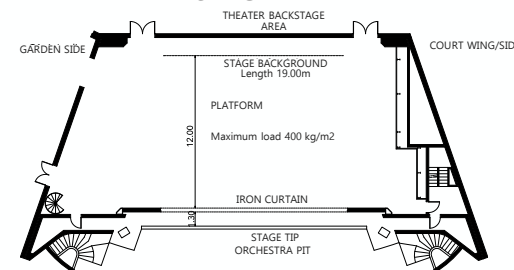
### MC6

Booth	2.28 W. x 7.20 depth. x 3.16 H.
Max. load	3 000 kg

### MAP OVERVIEW



### STAGE MAP



# AMBASSADEURS SALON



**2,500**  
CAPACITY FOR  
COCKTAIL RECEPTION

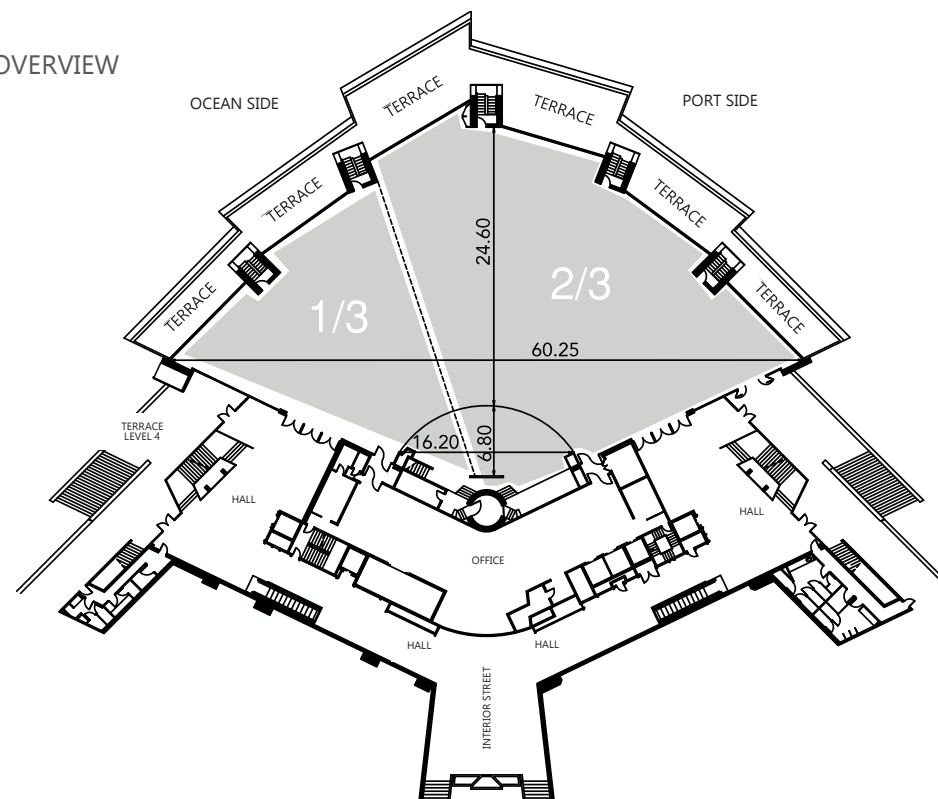


Level 4

## TECHNICAL SPECIFICATIONS

ROOM SIZE	SURFACE (m <sup>2</sup> )	EXTRA	HSP.	CATERING	COCKTAIL
1/3 ROOM	373	-	-	276	500
2/3 ROOM	754	-	-	648	1 500
FULL	1 127	500 kg/m <sup>2</sup>	4.15 / 5.65	948	<b>2 500</b>
STAGE	81	-	-	-	-
HALL	595	500 kg/m <sup>2</sup>	2.15 / 2.30	-	-
TERRACE	358	-	-	-	400

## MAP OVERVIEW



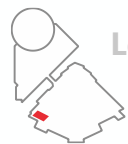


# CROISSETTE SALON

# 260 m<sup>2</sup>

HIGH END MULTI-PURPOSE SPACE WITH PANORAMIC VIEWS

PALAIS DES FESTIVALS ET DES CONGRÈS CANNES

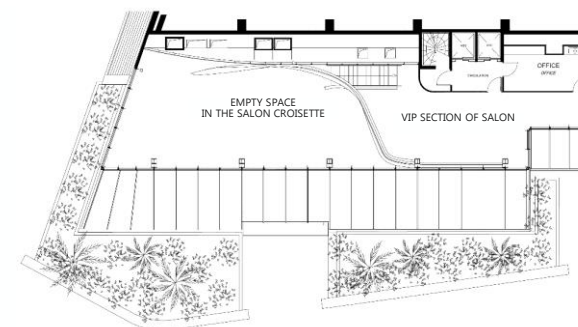
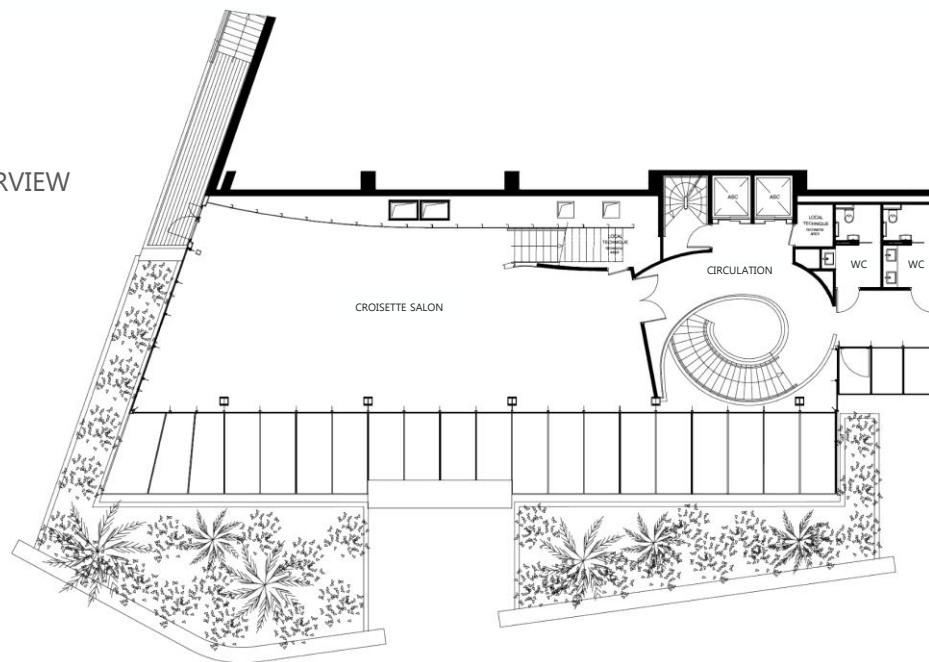


Levels 4 & 5

## TECHNICAL SPECIFICATIONS

	SURFACE (m <sup>2</sup> )	HSP	SCREEN.	CINEMA	CLASS	CONFERENCE
CROISSETTE SALON	146	2.20 / 4.80	5 X 3.10	70	48	76 / 95
MEZZANINE	62	2.25				

MAP OVERVIEW





# RIVIERA HALL

6,877 m<sup>2</sup>



## Niveau 0

### TECHNICAL SPECIFICATIONS

	SURFACE (m <sup>2</sup> )	HSP
RIVIERA ROTUNDA	2 624	3.25 / 8.80
RIVIERA HALL	3 619	3.75
SALON SPACE	634	2.68 / 3.00
RIVIERA TERRACES	323.30	3.40

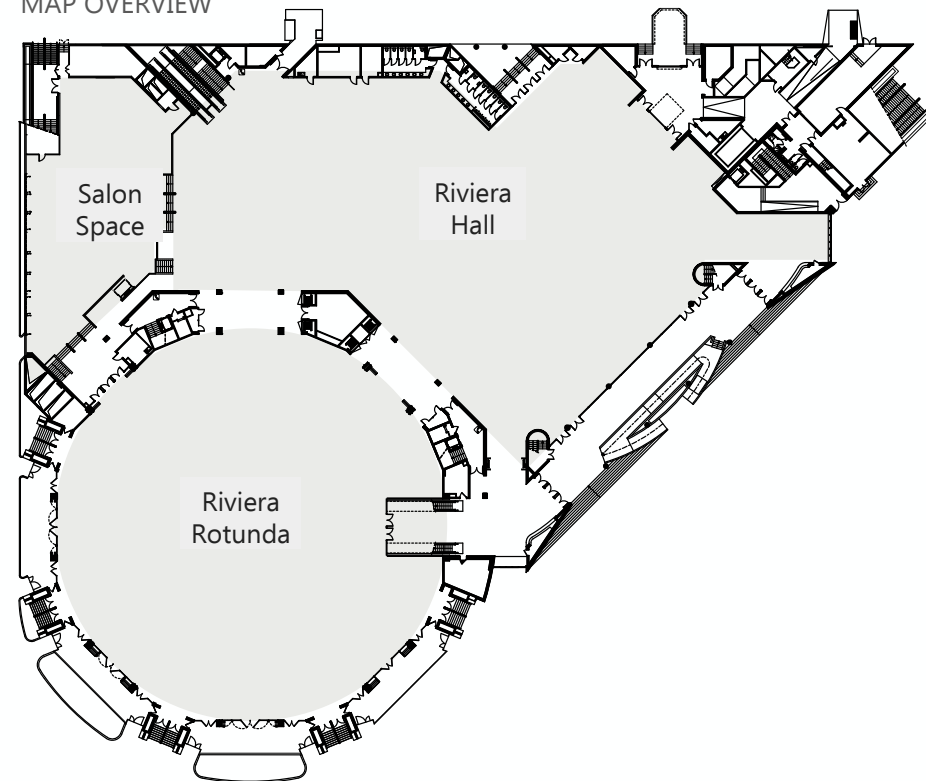
**RIVIERA SPACE** is divided into 3 zones that can be separately used, or combined:

- THE RIVIERA ROTUNDA
- LE RIVIERA HALL
- THE SALON SPACE

### RIVIERA HALL

4,253m<sup>2</sup> of expo surface space, comprising 634 m<sup>2</sup> of salon space.

### MAP OVERVIEW

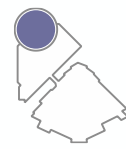




# LÉRINS ROTUNDA

  
PALAIS DES  
FESTIVALS  
ET DES CONGRÈS  
CANNES

2,150 m<sup>2</sup>  
OF RECEPTION  
AND EXHIBITION SPACE

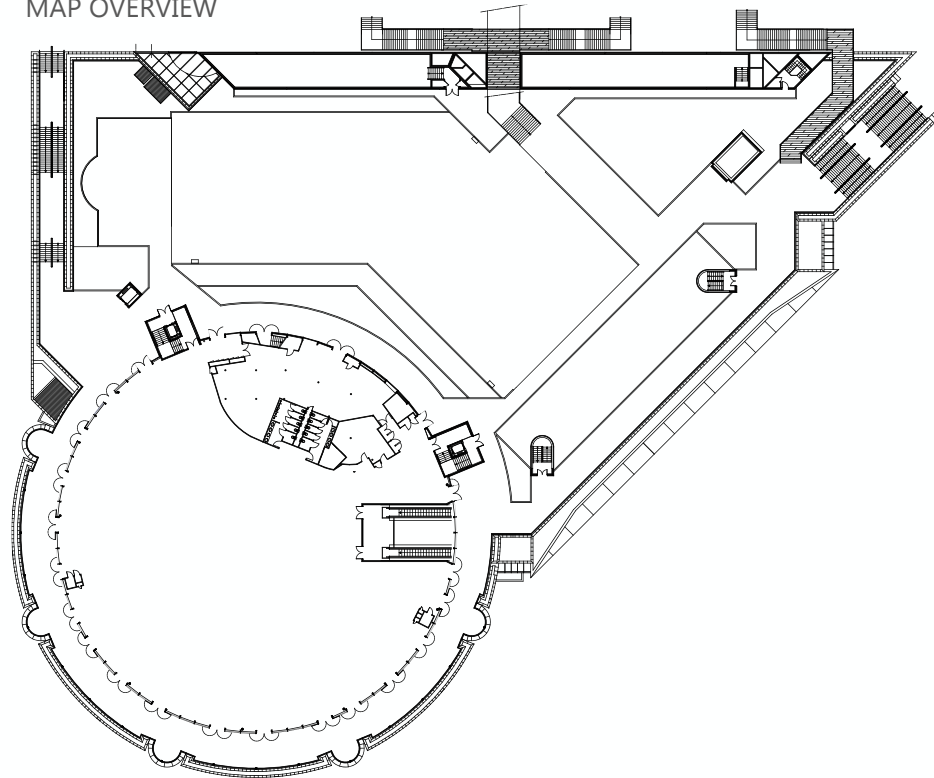


Level 1

## TECHNICAL SPECIFICATIONS

	SURFACE (m <sup>2</sup> )	HSP	MAX. LOAD	CATERING	CLASS	THEATER
LÉRINS ROTUNDA	2 600	3.55	500 Kg/m <sup>2</sup>	-	-	-
USABLE SURFACE SPACE	2 150	3.55	500 Kg/m <sup>2</sup>	1 722	720	2 076
OFFICE	450	2.05	500 Kg/m <sup>2</sup>	-	-	-

## MAP OVERVIEW





# Hi5 studio

PALAIS DES FESTIVALS

A PLUG & PLAY  
SPACE



Level 5

1 Hi-Tech Studio  
in Amphitheater,  
320 PAX

320 seats

1 platform  
120m<sup>2</sup>

1 Furniture set  
(6 sofas, 4 chairs, 1 low table,  
1 rug, 1 lamp)

1 Desk  
JT Format

1 Studio fully  
equipped & connected  
to all Palais rooms and spaces

1 LED Wall  
curved 4K  
10m x 3m

1 lighting desk  
/sound control,  
separated

CONFERENCE  
KEYNOTE  
MULTIPLEX  
WEBINAR  
TALK SHOW  
LIVE SHOWS TV  
INTERVIEWS

TELEVISED EMISSIONS  
/LIVE SHOWS  
INTERVIEW  
DEBATE  
TALK SHOWS  
JT

# JEAN MINEUR ROOM

Le Narrative Design, c'est quoi ?

Une conférence proposée par



CANNES FESTIVAL INTERNATIONAL JEUX

# 280

ARMCHAIRS  
WITH TABLE  
TRAYS



Level 3

The Jean Mineur room is accessible by the MC38 freight elevator

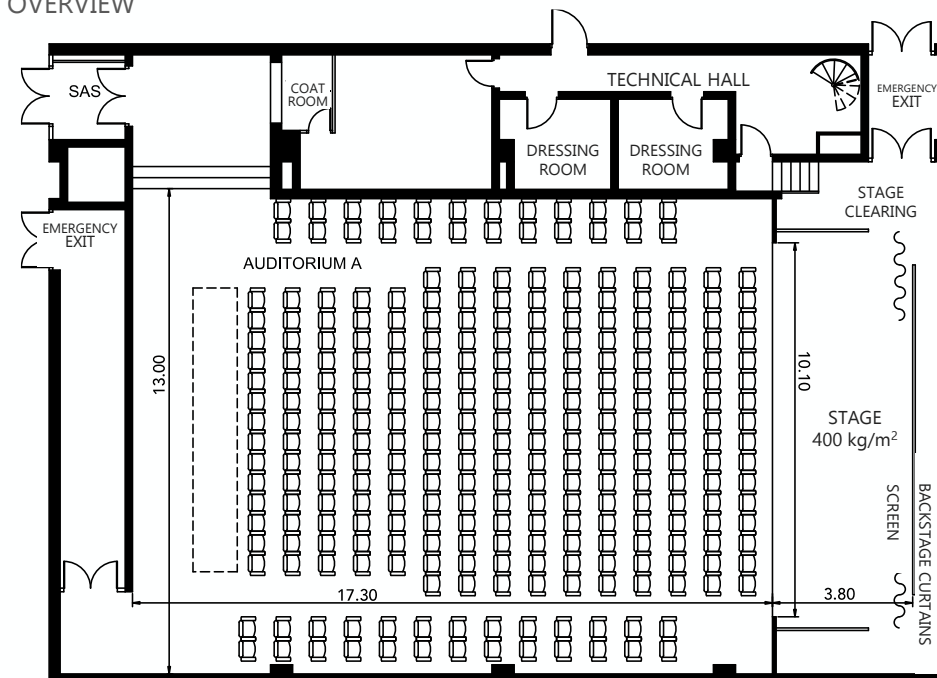
## MC38

## STAGE

Stage tip depth to the stage distance	3.80 m
Stage frame	10.15 L x 4.9 H
Opening	10.15 m
Fixed Cinema Screen	8.31 m x 3.50 m
Carriers	4
Parallel translation	4 languages
Infrared system in 3 blind booths	

Booth	2.28 L. x 7.35 Prof. x 3.16 H.
Max. Load	3 000 kg

## MAP OVERVIEW



# AUDITORIUM K

**147**  
ARMCHAIRS  
WITH TABLE  
TRAYS



## Level 4

### STAGE

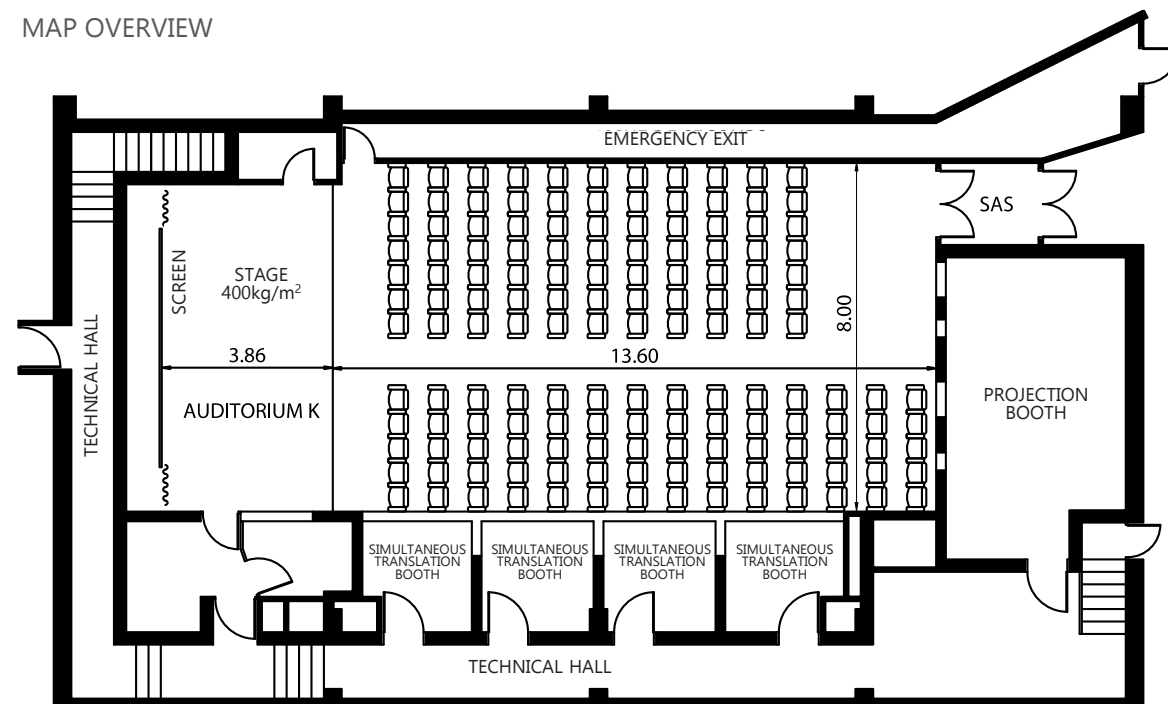
Room Surface	107 m <sup>2</sup>
Stage Surface	28.50 m <sup>2</sup>
Stage Depth	3.86 m
Opening	7.38 m
Fixed Cinema Screen	5.50 m x 2.50 m
Stage Structure	7.36 m x 3.60 m
Infrared system in 3 blind booths	

Auditorium K is served by elevators

### MC38

Booth	1.30 L. x 1.35 Prof. x 2.10 H. 76 cm L. de porte
Parallel translation in 4 languages	

### MAP OVERVIEW



# EXHIBITION HALL

France  
PALAIS DES FESTIVALS ET DES CONGRÈS CANNES



13,756 m<sup>2</sup>  
OF EXHIBITION SPACE

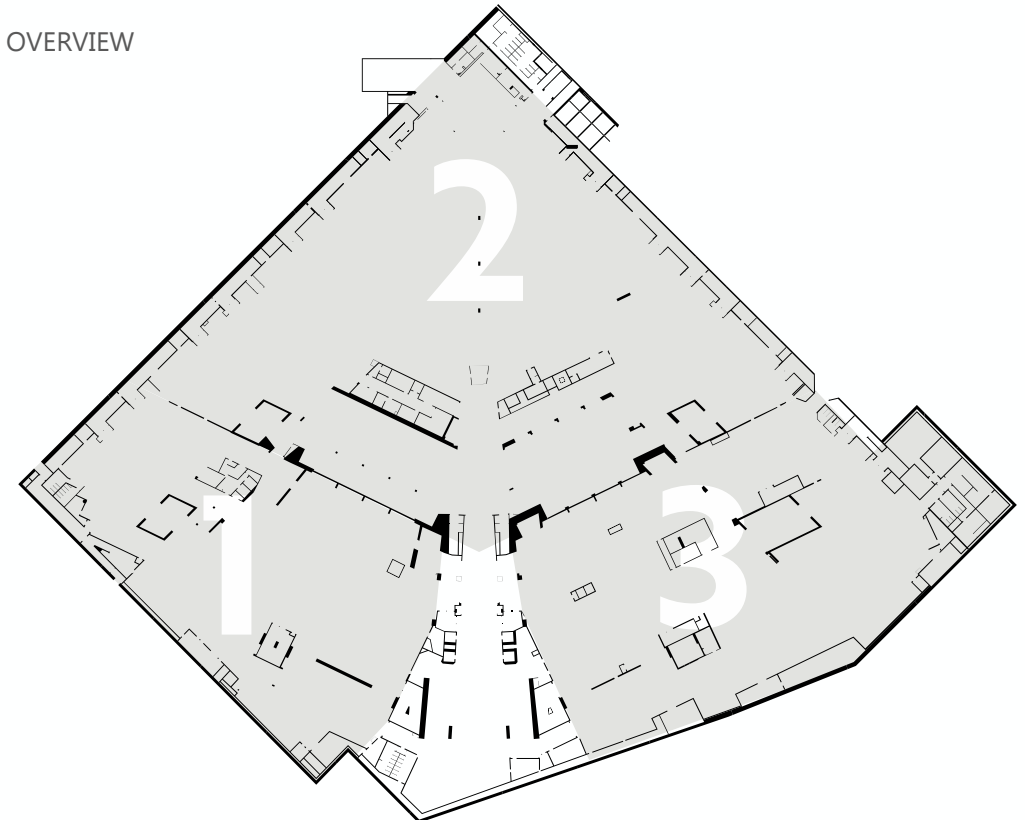


Levels 4 & 5

## TECHNICAL SPECIFICATIONS

	SURFACE (m <sup>2</sup> )	HSP
ZONE 1	3 175	2.10 / 2.75
ZONE 2	6 345	2.10 / 2.75
ZONE 3	3 656	2.10 / 2.75
ACCESS HALL	580	3.40
ZONES 1+2+3	13 756	2.10 / 2.75

## MAP OVERVIEW



# 11 TERRACES

5,774 m<sup>2</sup>

  
PALAIS DES  
FESTIVALS  
ET DES CONGRÈS  
CANNES





THEY  
TRUST US

MIDEM+

ipem



CANNESERIES

miptv



CANNES  
YACHTING  
FESTIVAL



ILTM

TF1



ASCENTIAL



mipcom  
CANNES

AUDITOIRE

EUROPEXPO



RX France